



February

FREEZE

ALL BREEDS FROZEN GENETICS
ONLINE SALE

SATURDAY,

FEBRUARY

20th
2021

SALE TIME 6PM MST, 7PM CST, 8PM EST
LIVE ONLINE CLOSE OUT ON DLMS

Welcome...

to the ever-evolving February Freeze Genetic Online Sale. This years offering has certainly grown not only in numbers, but quality of exciting matings, semen and rare opportunities. We are proud to be working with these fellow breeders in offering unique breeding opportunities from their elite programs .

The true value in the offering is very deep in terms of how you can obtain genetics that will advance your own breeding establishments. So many intriguing lots that are hard to come by make this a highlight of the spring sale season. We feel the timing of this sale is accurate for planning breeding decisions and time for shipping and handling of frozen material. I urge you to closely pay attention to the respective breeds involved and the offering within. We've carefully selected the lots to make this event a place where you can quickly succeed with a planned mating, flush or straw of semen that can be influential to your herd and upcoming sale of offspring. The Strongbow pick is something that doesn't happen often, this program has fastly become one of the most progressive outfits in the entire country. The Cash Advance daughter selling from Gilchrist is straight from the show barn and ready to wear leather where backdrop pictures are taken! Please don't be afraid to contact any of us at T Bar to discuss the offering and make plans or help guide you with some of your breeding choices . We are very familiar with the entire offering and strongly encourage your participation at any level within the lots on offer.

Again, remember this is an online only live close out sale. The T Bar team along with DLMS will be broadcasting this event live from the beautiful LLB sale headquarters in Alberta, if you happen to be close by. Again, thank you for your appreciation and interest and please don't hesitate to call or text any of us

Thanks again,

Ben Wright



February FREEZE

ALL BREEDS FROZEN GENETICS
ONLINE SALE

SATURDAY,
FEBRUARY
20th
2021

SALE TIME 6 PM MST, 7 PM CST, 8 PM EST

Sale Staff...

Auctioneer

Chris Poley 306-220-5006

T Bar C Cattle Co.

Ben Wright 519-374-3335

Shane Michelson 403-363-9973

Chad Wilson 306-577-1256

DLMS

Mark Shologan 780-699-5082



Chris Poley
306-220-5006



Ben Wright
519-374-3335



Shane Michelson
403-363-9973



T Bar C Cattle Co. Ltd.
Box 2330
Warman, SK S0K 4S0
Ph: 306-933-9315
Fax: 306-934-0744
info@tbar.com

SALE WILL BE CONDUCTED LIVE ONLINE ONLY ON DLMS.CA

How to participate in this DLMS Online Only Live Sale

1. Visit www.dlms.ca, click the REGISTRATION link and fill out the registration form. From this page you will sign-up for a free user account and it allows you to select a username and password for use on www.dlms.ca. Already have an account, simply sign in with your username and password.
2. To be Approved for bidding on the sale - Log in to www.dlms.ca with your username and password and click BUYER APPROVAL link located on the left hand side of the page, then click the SIGN UP button beside the sale you are interested in bidding on. We recommend that you request to bid for the sale at least 24 hours prior to the sale, we will do our best to approve you after this point but the earlier the better to confirm approval of bidding.
3. Approx. 24 Hours ahead of the sale we will post and update sheet with sale order and any up to date catalogue information & changes to the sale offering. Go to the sale page and view the up-to-date sale lot info, pictures and videos on each lot selling.
4. On Sale Day go to www.dlms.ca and with your username and password log in to the DLMS website. After the sale broadcast has started click the VIEW SALE button on the home page for the sale you are interested in bidding on. (DLMS starts purebred sale broadcasts approximately 30 min prior to sale time and the VIEW SALE button will appear at this point when the sale broadcast is started.)
5. During the sale when the lot comes up you are interested in bidding on simply click the Bid button. When your bid has been accepted your bid button will turn RED. If the price increases and you are out bid your bid button will turn back to BLUE to stay as the high bidder you must bid again. PLEASE remember that your bid button must be RED to be the high bidder and win the lot. If you require assistance with getting approved for the sale, Interested in Proxy Max Bidding or bidding via phone talk to any of the DLMS Purebred team, Sale manager or Sale consignors and we can help you in purchasing the lot you are interested in.

Internet Bidding Available

DLMS
www.dlms.ca

**For more information call DLMS:
Mark Shologan 780.699.5082 or
DLMS Purebred Team 780.991.3025**

DLMS - Mark Shologan - 780-699-5082 or DLMS Purebred Team - 780-991-3025

February Freeze 2021 • Live on DLMS • February 20, 2021



Lot **01**

Pick of the Strongbow Farms 2020 Open Heifers

With our growing herd of over 400 purebred cows calving this winter, we have decided to offer pick of the entire pen of 2020 open heifers. This pen is something we sure are proud to offer to the industry, with over 100 to select from. Breed leading sires such as Rainfall, President, Resource, Renown and Raindance to name a few, lead the way in the pen. With the offering being of the current 2020 open heifers we are also willing to breed the chosen female to the sire of your choice at no cost. Please don't hesitate to stop in at anytime to view our operation, as well as check out our bull sale offering which will take place on March 26th at our farm. If you have any questions please don't hesitate to call us or any of the T Bar staff.

Selection to be made by April 15, 2021.

Offered by Strongbow Farms Ltd.



Rehorst Eliminator June 502C
Donor Female Currently in Embryo Transfer



Gillco Allegra 2A
Donor Female Currently in Embryo Transfer



Resource Daughter
In production at Premier Livestock and Otter Creek



Resource Daughter
In production at Rogers Custom Farming



Angus Ranch Daughter
In production at Schwan Angus Ranch



Renown Daughter
In production at Premier Livestock



Lot
02

GF Crushmaid 100H

Female GFA 100H 2156553 Mar. 1, 2020

EPDS	BW	WW	YW	MILK	CE
	1.1	66	115	23	4.5

S LD CAPITALIST 316
CARDINAL CASH ADVANCE 60F
CARDINAL LUCY 60D

D CONNEALY FINAL PRODUCT
GF CRUSH MAID 100F
GF CRUSH MAID 100B

A very complete, balanced March heifer who checks off all the boxes. Her bold spring of rib and shape as well as her broodiness make her a standout in the heifer pen and she is backed by a cow family who has been hard working and consistent year after year. On top of her impressive phenotype she also boasts an impressive EPD set ranking in the top 25% of the breed for BW and top 6% for both WW and YW. This is the first female to sell at public auction off the Cash Advance bull who will undoubtedly see a lot of use in the coming years producing progeny that look and perform like this one.

Offered by Gilchrist Farms



GF Crushmaid 100B
With maternal sister to Dam at side



Lot
02A

Ten (10) Packages of Ten Units of Semen

Cardinal Cash Advance 60F

Male IMP 60F 2107845 Jan. 25, 2018

EPDS	BW	WW	YW	MILK	CE
	1.8	75	132	24	7.0

S LD CAPITALIST 316

CONNEALY CAPITALIST 028

LD DIXIE ERICA 2053

D CARDINAL LUCY 60D

BARSTOW CASH

MSF LUCY 201

When we are looking for a new herd sire we take a lot of time and patience making sure he is the right fit. Feet have to be great, he needs to be backed by a sound functional dam, he needs to be stout featured and have an abundance of capacity and have the data to back up an ideal phenotype. Cash Advance is that total package. No other bull in the Canadian herd book matches him for his EPD combination of low Birth Weight, YW, Claw, Angle and CW, all traits that are highly valuable to producers. He is sired by the famed 316 who has produced some of the top daughters in the breed as of late and we except this impressive individual to follow in the same footsteps.

Offered by Gilchrist Farms



PM Blossom 124'13
 Dam to the \$33,000 PM Executive Decision bull who sold to W Sunrise Angus and is just starting to make his mark in the Angus world

Lot **Choice of Three (3) or Five (5) Embryos**
03 Schiefelbein Showman 338 X PM Blossom 124'13

PE EPDS	BW	WW	YW	MILK	CE
	1.7	66	121	29	6.0

S SCHIEFELBEIN ATTRACTIVE 4565
 SCHIEFELBEIN SHOWMAN 338
 FROSTY ELBA 3745

D HF THUNDERBIRD 146Y
 PM BLOSSOM 124'13
 POPLAR MEADOWS BLOSSOM 5'10

The Showman semen recently commanded \$1750 to \$1850 per straw. He definitely is a young sire with tons of excitement surrounding him. His first two daughters offered for sale sold for well over \$20,000 each. Word is, his bull calves will be highly sought after this spring. The dam is from my most prolific cow family and is dam to PM Executive Decision who is making his mark in the Angus world. We are anxiously awaiting several 124A embryos to be born this winter. A no miss cow bred to a leading edge bull should be a sound investment. Embryos are stored at Bow Valley Genetics and are qualified for Canada, USA, EU and AUS. Offered by Poplar Meadows Angus



PM Executive Decision 5'17
 Maternal Brother to Embryos



Lot
04A

Two (2) Units of Semen

Offered by Sunderland Ranch

Lot
04B

Five (5) Units of Semen

Offered by Cash Cattle Company

S A V America 8018

Male IMP 8018F 2161873 Jan. 31, 2018

EPDS	BW	WW	YW	MILK	CE
	3.8	84	139	19	1.0

S S A V PRESIDENT 6847

COLEMAN CHARLO 0256

S A V BLACKCAP MAY 4136

D S A V MADAME PRIDE 0075

S A F 598 BANDO 5175

S A V MADAME PRIDE 8264

Here is a bull that needs no introduction! He is the \$1.51 million world record selling bull in the Angus breed He has an unmistakable herd bull presence and is backed by the maternal matriarch, S A V Madame Pride 0075 who served in the S A V program for an incredible 18 years.

Lot 04A: Stored at Alta Genetics, AB.

Lot 04B: Stored at Millennium Genetics, AB



S A V America 8018
Sire of Embryos

Lot
05

Package of Three (3) Embryos

S A V America 8018 X JL Evening Tinge 5110

PE EPDS	BW	WW	YW	MILK	CE
	2.8	67	114	27	1.5

S S A V AMERICA 8018

S A V PRESIDENT 6847

S A V MADAME PRIDE 0075

D JL EVENING TINGE 5110

S A V ELIMINATOR 9105

JL EVENING TINGE 1380

JL Evening Tinge 5110 was Lot 46 in the JL Dispersal this fall. She is what you want in an Angus female, deep, long and moderate with that ability to add power to her calves from a proven pedigree with Rito 707, 004, May 2397 as well as 57R who has done great things. And to add to all that, she ranks in the top 1% for Milk. With the mating to the \$1.51 million dollar S A V America 8018 there is no telling what the calf crop can do.

Guaranteeing one (1) pregnancy, if implanted by a certified technician. Embryos are stored at Ranchland Veterinary Services, SK.

Offered by D&N Livestock



JL Evening Tinge 1380
Dam of JL Evening Tinge 5110
In production at Clegg Angus, AB



S A V America 8018
Sire of Embryos

Lot
06

Package of Three (3) Embryos

S A V America 8018 X JL Tierra 0016

PE EPDS	BW	WW	YW	MILK	CE
	4.8	83	136	20	-2.5

S S A V AMERICA 8018

S A V PRESIDENT 6847

D JL TIERRA 0016

S A V PRESIDENT 6847

S A V MADAME PRIDE 0075

JL TIERRA 6059

With our growing herd of purebred cattle we have decided to offer these embryos that are as fresh as we can make them. JL Tierra 0016 and her dam started off Day 2 of the legendary Johnson Livestock sale and 0016 ended up being the highest selling heifer calf at \$26,000. Her flawless dam was so interesting to us with an impeccable udder with a calm natured attitude and weaned off 0016 as the heaviest open heifer in JL history. We truly think 0016 will headline our donor pen in years to come as she is one of the thickest angus heifer calves we have ever seen. Mated to the rare and popular America we feel this mating should be a genetic masterpiece, whether bull or female.

Guaranteeing one (1) pregnancy, if implanted by a certified technician. Embryos are stored at Ranchland Veterinary Services, SK.

Offered by Strongbow Farms Ltd.



JL Tierra 6059
Dam of JL Tierra 0016
In production at Gavin Cattle, PEI



Conley Express 7211

Lot Three (3) Units of Sexed Female Semen
07A Male IMP 7211E 2136235 Mar. 27, 2017

Lot Three (3) Units of Semen
07B Male IMP 0243D 2042212 Jan. 27, 2016

EPDS	BW	WW	YW	MILK	CE
	3.5	59	98	16	-4.0

EPDS	BW	WW	YW	MILK	CE
	5.0	57	106	31	-3.0

S SMA WATCHOUT 482

SILVEIRAS WATCHOUT 0514

2K BEAUTY 961

SILVEIRAS STYLE 9303

D DPL SANDY 3040

K N C CABIN CREEK SANDY 804

This bull keeps making waves in the cattle industry. If watching the Cattlemens Congress junior and Open Show in Oklahoma, you will see Express was one of the predominant bulls, many of them placing in the top ten and winning classes. In Canada you've seen many winning classes at shows and topping sales. This is your chance to get the hard to find sexed Express, don't miss out.

Stored at Jeff Stephens.

Offered by Stephens Genetics

S CFCC BLACK JACK 001

SILVEIRAS EL CAPITAN 6510

CFCC FANTASIA DATELINE 633

VAR ALLEGIANCE 5157

D MALSONS SAVANNAH 27Y

MALSONS SAVANNAH 27W

If you are looking for a bull with a total outcross pedigree, show quality, eye appeal and interesting EPD numbers, then this is the bull for you. Because there is limited semen in Canada this might be the one and only time to jump on board and use this bull.

Stored at Jeff Stephens.

Offered by Stephens Genetics



KR Casino 6243



GL Floressa 531H
 Daughter of JL Floressa 5531 at Parkview Angus, AB

Lot
08

Offering The Right To Flush

JL Floressa 5531

Female JLMB 531C 1882665 May 19, 2015

EPDS	BW	WW	YW	MILK	CE
	2.8	44	74	26	3.0

S S A V 004 DENSITY 4336
 S A V 8180 TRAVELER 004
 S A V MAY 7238

D HF FLORESSA 42P

HF JUSTICE 52L

HF FLORRESSA 145M

This female is like a fine wine and the older she gets the better she is. A Density daughter who is easy fleshing, balanced front to back, has a beautifully constructed udder and produces powerful offspring. She stands out on pasture and her calves get noticed. Here is your chance to mate her the way you want and inject these highly maternal attributes into your herd. Her dam, HF Floressa 42P has over 25 direct descendants in the CAA herdbook, with a 13-year-old daughter selling for \$11,000 at the Johnson Livestock dispersal.

Guaranteeing six (6) embryos with an open top.
Offered by Larch Grove Farm Ltd.



JL Floressa 8214
 Maternal Sister to JL Floressa 5531
 13-year-old donor at Skull Creek Ranches, SK



Lot 09 **Offering The Right To Flush Premier Hason Empress 714**

Lot 09A **Package of Four (4) Embryos**
Conley South Point 8362 X Premier Hason Empress 714

EPDS	BW	WW	YW	MILK	CE
	1.4	46	78	25	6.5

PE EPDS	BW	WW	YW	MILK	CE
	1.0	51	87	26	9.8

- S** B C LOOKOUT 7024
- D** OSU EMPRESS 3100
- O C C LEGEND 616L
- GIBBET HILL MIGNONNE E37
- DAMERON FIRST IMPRESSION
- OSU EMPRESS 0135

- S** CONLEY SOUTH POINT 8362
- D** PREMIER HASSON EMPRESS 714
- STEVENSON TURNING POINT
- P R LADY 909 4200-587
- B C LOOKOUT 7024
- OSU EMPRESS 3100

Premier Empress 714E has surfaced to be the best daughter to date of the infamous OSU Empress 3100, the only ever female to be a two time Supreme Champion Female at the Royal Winter Fair, as well a 2 time Top 10 qualifier of the prestigious RBC Supreme at Canadian Western Agribition This young Lookout female is as well made as you can design one. She is super stout and has a picture perfect udder, here is your chance to mate her to the sire of your choice

Flush can be either conventional or IVF.

Guarantee six (6) #1 transferable embryos, with the purchaser receiving all of the resulting embryos.

Offered by Premier Livestock and Windulan Cattle Co.

In 2018 Empress 714E was the feature bred female where she sold to Windulan Cattle Company, then in 2019 embryos sold to the good herd of Ellsmere Farms in Nova Scotia. 714 is what we feel the next step of the great OSU Empress 3100. She is a massively constructed female with a picture perfect udder and has the look to be an impact female as her dam was for so many different outfits. When I saw Conley South Point at the 2019 CWA in Wilbars string I thought to myself we need to use this bull on the Empress line of cattle! He then went on to be Champion Angus Bull at CWA, as well as the super bowl of cow shows, the NWSS in Denver, Colorado for Wilbar, Poplar Meadow Angus and Conley Cattle. Here is an opportunity you don't want to miss! I think this mating will produce great ones.

Guaranteeing two (2) pregnancies, if implanted by a certified technician.

Embryos are stored at Heartland Animal Hospital and Vet Services, ON.

Offered by Premier Livestock and Windulan Cattle Co.



S A V Bismarck 5682

Lot **Ten (10) Units of Sexed (90) Female Semen**
10A Male IMP 5682R 1369591 Feb. 1, 2005
 S A V Bismarck 5682

Lot **Ten (10) Units of Semen**
10B Male IMP 035K 1061938 Feb. 20, 2000
 S A V Final Answer 0035

EPDS	BW	WW	YW	MILK	CE
	0.0	52	89	21	12.0

EPDS	BW	WW	YW	MILK	CE
	-1.2	55	94	22	13.0

- S** G A R GRID MAKER
 G D A R TRAVELER 044
 G A R PRECISION 2536
 SCHOENES FIX IT 826
D S A V ABIGALE 0451
 S A V ABIGALE 6062

- S** SITZ TRAVELER 8180
 G D A R TRAVELER 71
 SITZ EVERELDA ENTENSE 1137
 BON VIEW BANDO 598
D S A V EMULOUS 8145
 S A V SKY EMULOUS 2124

Semen is stored on farm, ON.
 Offered by Grist Farm

Semen is stored on farm, ON.
 Offered by Grist Farm



S A V Final Answer 0035



JL Forever Lady 5559

Final Answer daughter at MWC Investments Inc.



Lot
11

Four (4) Packages of Five Units of Semen

Mohnen General 548

Male IMP 0548E 2110305 Dec. 16, 2017

EPDS	BW	WW	YW	MILK	CE
	3.6	78	130	23	1.0

BALDRIDGE XPAND X743

S A V 8180 TRAVELER 004

S BALDRIDGE COLONEL C251

D S A V MADAME PRIDE 5290

BALDRIDGE ISABEL Y69

S A V MADAME PRIDE 0075

\$90,000 top seller from 2019 Mohnen Bull Sale in South Dakota. The dam of General is the legendary Madame Pride 5290, a \$2 million producing cow that has left her mark in the industry. His sire is a \$580,000 record setting outcross pedigreed bull from the Baldrige Bros in Nebraska and is an AI sire noted for his structural soundness and increased muscle expression. The first sons of General to sell at auction are the top sire group in the 2021 Mohnen Bull Sale offering.

**Semen is stored at Alta Genetics, AB.
Offered by LLB Angus and Tom Burke**



Mohnen Lieutenant
Son of Mohnen General 548



Mohnen General 970
Son of Mohnen General 548



S A V Madame Pride 5290
Dam of Mohnen General 548



Lot
12

Package of Three (3) Embryos

Mohnen General 548 X LLB Exquisite Lady 163H

PE EPDS	BW	WW	YW	MILK	CE
	3.8	75	126	22	2.0

S MOHNEN GENERAL 548

BALDRIDGE COLONEL C251

S A V MADAME PRIDE 5290

D LLB EXQUISITE LADY 163H

HF THUMPER 108E

LLB EXQUISITE LADY 163D

LLB 163H is one of our very top 2020 heifers. Her tremendous Cash Flow dam descends from the famous LLB Exquisite Lady family that produced our Denver Champion. General is the \$90,000 top seller from 2019 Mohnen Bull Sale in South Dakota.

Guaranteeing one (1) pregnancy, if implanted by a certified technician.

Embryos are stored at Davis-Rairdan Embryo Transplants Ltd., AB.

Offered by LLB Angus



Mohnen General 548
Sire of Embryos



Lot
13

Offering The Right To Flush

Pedersen Mardi 5C

Female PED 5C 1836767 Jan. 7, 2015

EPDS	BW	WW	YW	MILK	CE
	0.5	38	68	24	10.0

S S A V 004 DENSITY 4336

S A V 8180 TRAVELER 004

D OAK MANOR MARDI 51Y

SITZ DASH 10277

S A V MAY 7238

OAK MANOR MARDI 2R-8H

Here is an opportunity to go right into the heart of our program and flush, what we feel may be our very best, to the bull of your choice. Mardi 5C has been admired in the pasture by all that have seen her. Definitely one that catches your attention with her mass, rib shape and udder quality. She then keeps it with her soundness and production. Her maternal siblings have been past high sellers for us such as Pedersen Explosion 407E working at Johnson Ranching (WJ Simmentals) and Clifford Land and Cattle and Pedersen Mardi 124G to Lucky 7 as the high selling heifer calf in the Form and Function Sale. On her one and only trip to town she was named Senior Champion Female at Stockade Roundup in 2020. Pedersen G Force 63G, her 2019 calf, was a feature and high seller in our 2020 bull sale. Her 2020 coupon, Pedersen Habanero 51H, also commanded a lot of attention from many astute cattle producers and was sure to be the feature at our 2021 bull sale until his untimely death in early December. Making it a little harder to part with any genetics from her. We feel it is a tremendous opportunity to grab hold of this wonderful breeding piece and are confident in the success of her offspring. She is due to calve January 23 and available to flush after that. Flush to be done at Bow Valley Genetics.

Guaranteeing six (6) embryos with all embryos going to the buyer. Flush costs are the responsibility of the buyer.

Half down at sale time and half at completion of a successful flush.

Offered by Pedersen Livestock



Pedersen Mardi 5C with Calf
2020 Stockade Round-Up Senior Champion Female



Pedersen Mardi 124G
Maternal Sibling to Pedersen Mardi 5C



Pedersen Habanero 51H
Son of Pedersen Mardi 5C



Lot
14

Offering The Right To Flush

BNWZ Hauge Pride 012F

Female IMP 0012F 2117376 Feb. 10, 2018

EPDS	BW	WW	YW	MILK	CE
	3.9	58	93	20	-1.0

S EXAR BLUE CHIP 1877B

DAMERON FIRST CLASS

GREENS PRINCESS 1012

D TER PRIDE 01B

DAMERON FIRST IMPRESSION

MINDEMANN PRIDE 1005

We are excited to offer a flush on this powerful female ! This incredible daughter of EXAR Blue Chip won her first big show in spring of 2019 at the prestigious Spring Futurity in London, Ontario and hasn't looked back. She won her division later on that fall at the Toronto Royal. She was purchased from Nowatzke Angus at the Bases Loaded sale in Denver. Justamere and our partners Carder Investments were honoured to be asked to offer this Flush opportunity at the February Freeze Sale. The pedigree is chock full of champion genetics and the female herself is a beauty. This is a golden opportunity!

Guaranteeing six (6) viable embryos.

Offered by Justamere Farms Ltd. and Carder Investments



Lot
15

Four (4) Packages of Ten Units of Semen

S A V Resource 1441

Male IMP 1441Y 1707295 Jan. 7, 2011

EPDS	BW	WW	YW	MILK	CE
	4.1	69	132	17	1.0

S R R RITO 707
RITO 707 OF IDEAL 3407 7075
 IDEAL 3407 OF 1418 076

D S A V 8180 TRAVELER 004
S A V BLACKCAP MAY 4136
 S A V MAY 2397

Stored at Millennium Genetics, AB
 Offered by Jacobs Ranch



Blair's Mercedes 717C
 \$27,500 Resource daughter at D & N Livestock



JL Forever Lady 7141
 \$10,000 Resource daughter at MWC Investments Inc.



Lot
16

Five (5) Packages of Ten Units of Semen

5T Power Chip 4790

Male IMP 4790B 1959039 Feb. 13, 2014

EPDS	BW	WW	YW	MILK	CE
	0.8	63	99	14	11.0

DAMERON FIRST CLASS

B C MATRIX 4132

S EXAR BLUE CHIP 1877B

D 5T MISS WIX 8002

GREENS PRINCESS 1012

CIRCLE OAK MISS WIX 4014

Tried, tested and true. For the producer who is looking for a consistent calf crop this bull will get you exactly what you need. Every calf is born easy, aggressive to get up and nurse while maturing into deep bodied, easy fleshing cattle with added hair and style. Calves are exceptionally docile and highly marketable demanding high dollars both north and south of the border.

Offered by Gilchrist Farms

Power Chip Progeny:
Gilchrist Farms

Power Chip Progeny:
Conley Cattle



GFA 24F



GFA 71F



GFA 63G



GFA 166E



GFA 129F



GFA 683G



GFA 129F



GFA 683G



GFA 129F



GFA 129F



Lot
17

Four (4) Packages of Five Units of Semen

Musgrave 316 Stunner

Male IMP 1676D 1995252 Feb. 19, 2016

EPDS	BW	WW	YW	MILK	CE
	0.2	68	119	23	8.0

S LD CAPITALIST 316

CONNELY CAPITALIST 028

LD DIXIE ERICA 2053

D MCATL BLACKBIRD 831-1378

MCATL PURE PRODUCT 903-55

MCATL BLACKBIRD 1378-573

We are fortunate enough to have a few remaining straws of semen on this popular sire. No matter bull or female we have had great luck with this calving ease sire that makes a phenomenal design in his offspring with ideal EPD profile. Since now being deceased the semen isn't easy to find!

Offered by Strongbow Farms Ltd.



GF Lucknow 905G

\$40,000 Stunner son, sold to Karalisha Cattle Company



Lot
18

Five (5) Packages of Ten Units of Semen

GF Lucknow 905G

Male GFA 905G 2105682 Jan. 20, 2019

EPDS	BW	WW	YW	MILK	CE
	1.4	77	129	27	7.0

LD CAPITALIST 316

CONNEALY FINAL PRODUCT

S MUSGRAVE 316 STUNNER

D GF JENA 905E

MCATL BLACKBIRD 831-1378

GF JENA 905C

The \$40,000 high selling featured bull to sell at the 2019 GF and Friends In It To Win It sale. This bull's calves have been highly anticipated and the first calves have come easy and starting to bulk up fast. His impressive individual weights along with his EPDs make him a bull that can be used to improve even the toughest critics performance

Offered by Karalisha Cattle Company



Lot Two (2) Packages Of Ten Units of Semen
19A Male IMP 1441Y 1707295 Jan. 7, 2011
 S A V Resource 1441

EPDS	BW	WW	YW	MILK	CE
	4.1	69	132	17	1.0

R R RITO 707
S RITO 707 OF IDEAL 3407 7075
 IDEAL 3407 OF 1418 076
 S A V 8180 TRAVELER 004
D S A V BLACKCAP MAY 4136
 S A V MAY 2397

Semen is stored at Alta Genetics, AB.
 Offered by Johnson Livestock

Lot Two (2) Packages Of Ten Units of Semen
19B Male IMP 3439A 1887276 Jan. 7, 2013
 S A V Renown 3439

EPDS	BW	WW	YW	MILK	CE
	2.8	70	127	20	-2.0

R R RITO 707
S RITO 707 OF IDEAL 3407 7075
 IDEAL 3407 OF 1418 076
 S A V 8180 TRAVELER 004
D S A V BLACKCAP MAY 4136
 S A V MAY 2397

Semen is stored at Alta Genetics, AB.
 Offered by Johnson Livestock



JL Forever Lady 9078
 \$42,000 Renown daughter at Cuddy Farms



S A V Bloodline 9578
Sire of Embryos

Lot 20 **Two (2) Packages of Three Embryos**
S A V Bloodline 9578 X Gillco Allegra 2A

PE EPDS	BW	WW	YW	MILK	CE
------------	----	----	----	------	----

S S A V BLOODLINE 9578
S A V RAINFALL 6846
S A V EMBLYNETTE 2369

D GILLCO ALLEGRA 2A
S A V NET WORTH 4200
GILLCO ALLEGRA 5T

What an exciting mating here! Allerga 2A anchors our donor pen and are anxiously awaiting her upcoming progeny, as she was the \$41,000 top seller from Gilchrist. Previous embryos have sold through this very sale by President, but we have decided to mate her to the most talked about Rainfall son out there... Bloodline. Bloodline is the sire of choice today with a whopping 365 day weight with a low birth number that makes him cover all the bases. 2A is a power cow from every angle, we truly believe from her past progeny that no matter who she's mated to she makes the kind of cattle that catch your eye and pound down the scale. Truly one of the premier Network worth daughters out there!

**Guaranteeing one (1) pregnancy, if implanted by a certified technician. Embryos are stored at Ranchland Veterinary Services, SK.
Offered by Strongbow Farms Ltd.**



Gillco Allegra 2G
Maternal sister to Gillco Allegra 2A



GF Allegra 200E
Maternal sibling to embryos



Lot 21 Package of Three (3) or Five (5) Embryos
 Conley South Point 8362 X Young Dale Tilda 733E

PE EPDS	BW	WW	YW	MILK	CE
	1.9	50	89	24	7.0

S STEVENSON TURNING POINT
 CONLEY SOUTH POINT 8362
 P R LADY 909 4200-587

D COLEMAN CHARLO 0256
 YOUNG DALE TILDA 733E
 YOUNG DALE TILDA 4P

Young Dale Tilda is an ideal Angus female. Right in frame size, correct and sound at the ground. She has a beautiful udder with an incredible look including a long, clean neck with the perfect dished out Angus skull with the wide muzzle. One of my favorite things about this beautiful Charlo daughter is her ability to transmit her phenotype into her calves. Another would be how awesome she is on the move. Locomotion is widely under valued and this cow displays how great it can be. This is one I wish we had the opportunity to show as a heifer calf and bred but they don't all get halter broke in time. The mating with the Champion of Champions - Conley South Point- has unlimited potential for show ring with calving ease and production built in.

Embryos are stored at Jaymarandy Livestock and are for Domestic sale only.
Offered by Jaymarandy Livestock



Jaymarandy Lil Man Henry 21H
 Son of Young Dale Tilda 733E



Jaymarandy To The Max 9003G
 Son of Young Dale Tilda 733E



Conley South Point 8362
 Sire of Embryos

February Freeze 2021 • Live on DLMS • February 20, 2021

7497 is from a branch of the Blackcap Mays who are really starting to prove themselves in our herd. She is sired by S A V Seedstock out of the S A V International daughter, Blackcap May 4397, who is owned by ZWT Ranch. 4397 is out of the great Blackcap May 2397 from the heart of the SAV herd! 7497 is moderate and powerful but has femininity and a superb udder. Her President two-year-old has recently calved and has changed from being Katie's favourite heifer to favourite cow.



PVA Blackcap May 7497

Lot 22 Two (2) Packages of Three Embryos From A Pooled Flush

POSS Maverick X PVA Blackcap May 7497

EPDS	BW	WW	YW	MILK	CE
	3.4	67	113	25	1.0

BASIN PAYWEIGHT 1682

S POSS MAVERICK

POSS PRIDE 5163

S A V SEEDSTOCK 4838

D PVA BLACKCAP MAY 7497

PVA BLACKCAP MAY 4397

POSS Maverick X Siebring Blackcap May 733

EPDS	BW	WW	YW	MILK	CE
	3.4	66	119	29	2.0

BASIN PAYWEIGHT 1682

S POSS MAVERICK

POSS PRIDE 5163

S A V CUTTING EDGE 4857

D SIEBRING BLACKCAP MAY 733

S A V BLACKCAP MAY 273

Blackcap May 733 was purchased as a bred heifer from Siebring Angus and we are thrilled with her! She is a hardworking mamma cow, raising two of our best bulls to date. She is sired by S A V Cutting Edge out of Blackcap May 273, the 9969 daughter of 2397. Half-interest of 473, another 273 daughter, sold to ZWT Ranch for \$300,000. Other daughters have highlighted past Siebring Angus sales and the North Perth Angus Dispersal. 733 is moderate framed and feminine fronted with tremendous feet and legs. A problem free cow with a bright future!

Guaranteeing one (1) pregnancy per three embryos, if implanted by a certified technician. Embryos are stored at Oxford Bovine Veterinary Services. Offered by Meadow Bridge Angus



S A V Blackcap May 273
Dam of Siebring Blackcap May 733



Siebring Blackcap May 733



Lot
22A

Package of Three (3) Embryos Made With Female Sorted Semen

S A V Territory 7225 X Siebring Blackcap May 733

PE EPDS	BW	WW	YW	MILK	CE
	4.1	74	131	23	1.0

S S A V TERRITORY 7225
S A V RESOURCE 1441
S A V EMBLYNETTE 3293

D SIEBRING BLACKCAP MAY 733
S A V CUTTING EDGE 4857
S A V BLACKCAP MAY 273

Blackcap May 733 was purchased as a bred heifer from Siebring Angus and we are thrilled with her! She is a hardworking mamma cow, raising two of our best bulls to date. She is sired by S A V Cutting Edge out of Blackcap May 273, the 9969 daughter of 2397. Half-interest of 473, another 273 daughter, sold to ZWT Ranch for \$300,000. Other daughters have highlighted past Siebring Angus sales and the North Perth Angus Dispersal. 733 is moderate framed and feminine fronted with tremendous feet and legs. A problem free cow with a bright future..these embryos are not easy for us to sell. **Guaranteeing one (1) pregnancy, if implanted by a certified technician. Embryos are stored at Oxford Bovine Veterinary Services. Offered by Meadow Bridge Angus**



S A V Blackcap May 273
Dam of Siebring Blackcap May 733



Lot
23

Two (2) Packages of Three Embryos

S A V Raindance 6848 X PVA Blackcap May 8297

PE EPDS	BW	WW	YW	MILK	CE
	1.9	62	115	18	5.0

COLEMAN CHARLO 0256

S S A V RAINDANCE 6848

S A V BLACKCAP MAY 4136

S A V SENSATION 5615

D PVA BLACKCAP MAY 8297

PVA BLACKCAP MAY 4397

Blackcap May 8297 is a sister to our Blackcap May 7497 who we loved so much after she arrived at Meadw Bridge we went back to buy her and 8297 hasn't disappointed! By S A V Sensation, we feel like that cross really complimented her \$100,00 International dam. 8297 inherited the tremendous width and power of her dam with a well attached udder. She's big footed and has a great disposition. We also have a 2020 sister by Raindance. If she is any indication of what the resulting offspring will look like you don't want to miss these embryos!

Guaranteeing one (1) pregnancy per three embryos, if implanted by a certified technician. Embryos are stored at Oxford Bovine Veterinary Services. Offered by Meadow Bridge Angus



PVA Blackcap May 4397
Dam of PVA Blackcap May 8297



Lot
24

Package of Three (3) Embryos Made With Female Sorted Semen

S A V Territory 7225 X PFLC Lucy 9760E

PE EPDS	BW	WW	YW	MILK	CE
	1.7	70	128	19	3.5

S S A V TERRITORY 7225

S A V RESOURCE 1441

S A V EMBLYNETTE 3293

D PFLC LUCY 9760E

S A V RENOWN 3439

SMR LUCY 9760

Lucy 9763E is a very exciting young cow, she's made a lot of friends! Sired by S A V Renown, her second dam is a full sister to the one and only FINAL ANSWER! I could end my footnotes there but this cow's phenotype needs to be talked about. She has a beautiful front end with an explosive middle, width throughout, picture perfect udder and quality feet and legs that will ensure her longevity here! We're excited about that because her daughters are the very best in our replacement pen. Her 2020 Raindance heifer is a favourite of anyone who visits and her 2021 President heifer is just an eyecatcher...there are tremendous reports out of Schaff Angus Valley on the Territory progeny. We feel mating Resource's best son on our best Renown is the line breeding that has made S A V famous. **Guaranteeing one (1) pregnancy, if implanted by a certified technician.**

Embryos are stored at Oxford Bovine Veterinary Services.

Offered by Meadow Bridge Angus



Lot
25

Package of Four (4) Embryos

Conley South Point 8362 X Gibson 7024 Beauty 115B

PE EPDS	BW	WW	YW	MILK	CE
	2.3	54	91	24	7.0

S CONLEY SOUTH POINT 8362
STEVENSON TURNING POINT
P R LADY 909 4200-587

D GIBSON 7024 BEAUTY 115B
B C LOOKOUT 7024
MVF BEAUTY 122W

Beauty has been a mainstay donor in our program. She herself is sired by BC Lookout, the bull who has built the foundation of our program. Beauty raised the high selling female of the 2018 Falls View Sale going to Dudgeon Cattle Co and in 2019 produced the feature Angus bull calf of the Falls View Sale. We are very excited about this mating. Conley South Point was the Grand Champion Bull of the 2019 CWA as well as the 2020 NWSS, the only bull to ever achieve championships at both shows. The combination of South Point's phenotype with the thickness and muscle of 115B should prove to make for an interesting 2022.

Guaranteeing two (2) pregnancies, if implanted by a certified technician. Embryos are stored at Heartland Animal Hospital and Vet Services, ON. Offered by Premier Livestock



Premier BC Beauty 802
Daughter of Gibson 7024 Beauty 115B



Premier Gold Chip 913
Son of Gibson 7024 Beauty 115B



Conley South Point 8362
Sire of Embryos



Lot
26

Two (2) Packages of Three Embryos

S A V Territory 7225 X S A V Blackcap May 4563

PE EPDS	BW	WW	YW	MILK	CE
	2.2	68	126	26	0.0

S S A V TERRITORY 7225
S A V RESOURCE 1441
S A V EMBLYNETTE 3293

D S A V BLACKCAP MAY 4563
S A V REVERE 1180
S A V BLACKCAP MAY 4136

S A V Blackcap May 4563 is a proven Pathfinder daughter of S A V Blackcap May 4136, the legendary and all time top producing income cow with \$10 million in direct progeny sales. 4563 is a fifth generation S A V embryo donor with exquisite femininity, abundant milk and unmistakable maternal presence with good feet. She earned a weaning ratio of 105 on her first 3 calves. Sunderland Ranch purchased S A V Blackcap May 4563 as the high selling donor cow at the S A V 2020 sale valued at \$45,000.00 USD. We are absolutely thrilled to own her as she is an incredible female to see in the flesh! She will be a cornerstone of our program well into the future.

Here is a mating to be excited about! S A V Territory 7225 is the greatest son of S A V Resource 1441! His dam S A V Emblynette 3293 by Density is a fifth generation donor and has all the right qualities to make a lasting impression in your program. When using proven genetics you can be confident the outcome will be positive. This mating with S A V Blackcap May 4563 is another special opportunity to invest in some of the best Angus genetics that will propel your program to new heights!

Guaranteeing one (1) pregnancy per three embryos, if implanted by a certified technician. Embryos are stored at Alta Genetics, AB. Offered by Sunderland Ranch



S A V Territory 7225
Sire of Embryos



Lot 27 Package Three (3) IVF Sexed Female Embryos
S A V Territory 7225 X S A V Blackcap May 4562

PE EPDS	BW	WW	YW	MILK	CE
	3.2	74	135	24	-1.0

S A V RESOURCE 1441

S A V REVERE 1180

S S A V TERRITORY 7225

D S A V BLACKCAP MAY 4562

S A V EMBLYNETTE 3293

S A V BLACKCAP MAY 4136

We are excited and proud of our first offering at Vissers Angus and what better way to introduce our program than to offer the very best of what we have. 4562 is our anchor donor and the \$26,000 lead-off and top selling female in the 2020 Autumn Angus Classic, acquired from Bar 5 Stock Farms, where she was one of the lead donors in their embryo export division. She is a direct daughter of the \$10.2 million producing S A V Blackcap May 4136 and a tremendous producer in her own right. 4562 has many maternal sisters leading top programs in the United States, but she is one of only a few in Canada. A flush sister, S A V Blackcap May 4563 selected by Sunderland Ranch of Maple Creek, SK as the \$45,000 top selling donor in the 2020 SAV Sale, where SAV retained the right for embryos. When you look at her maternal brothers, there are simply too many impact bulls to list them all, but these include Resource, Renown, President, Rainfall, Rainsance and many more. When we analyze her phenotype, 4562 is powerful in her design with an optimal amount of refined femininity and maternal presence. Her abundance of milk and her calm nature matches her EPD profile of TOP 8% and TOP 3% respectively. She is a real-world transmitter of performance and growth, weaning her last natural calf off at 936 lbs. and her growth EPDs also line up, boasting TOP 7% and TOP 4% for weaning and yearling growth, respectively. We are using embryo transfer to propel our program using the best genetics available and when selecting sires for our ET matings, we try and line up the most elite cows on the bottom on top of the pedigree. The mating for this offering does just that. S A V Territory 7225 is \$230,000 Lot 1 bull from the 2018 SAV Sale selected and now a feature sire for ST Genetics. Territory has been proclaimed by Kelly Schaff as the greatest Resource son ever produced and a major reason for this is his dam, S A V Emblynette 3293. 3293 is a direct daughter of S A V 004 Density 4336 and model Angus cow with ideal type and structure and impeccable udder quality. We could not be more excited about combining Territory and 4562 and now you too have the opportunity see the results first-hand and include these elite genetics in your program.

Guarantee one (1) 90-day pregnancy if implanted by a certified embryologist. Exportable to the USA. Stored at Boviteq Saint-Hyacinthe, QC.

Offered by Vissers Angus



S A V Territory 7225
Sire of Embryos



S A V Blackcap May 4563
Flush sister of S A V Blackcap May 4562



Lot
28

Eight (8) Units of Semen

S A V President 6847

Male IMP 6847D 2022643 Jan. 10, 2016

EPDS	BW	WW	YW	MILK	CE
	3.6	74	120	16	1.0

S COLEMAN CHARLO 0256
O C C PAXTON 730P
BOHI ABIGALE 6014

D S A V BLACKCAP MAY 4136
S A V 8180 TRAVELER 004
S A V MAY 2397

The \$750,000 lead off bull of the S A V 2017 Sale, and sire of the \$1.51 million S A V America 8018 in S A V 2019. He was the heaviest bull of his calf crop with a 1077 lb. day weight and a 1690 lb. yearling weight. He is powerful in every dimension - extra long, thick and heavy muscled with superior soundness, perfect feet and a friendly disposition. He is a direct son of the Famous S A V Blackcap May 4136.

Semen is stored at Bar 5 Stock Farms , Markdale, ON.

Offered by Vissers Angus



JL Glory 9199
Daughter of S A V President 6847



S A V America 8018
Son of S A V President 6847



S A V Renown 3439



JL Lady 8050
Renown daughter at Dudgeon Cattle Co.

Lot **Eleven (11) Units of Semen**
29 Male IMP 3439A 1887276 Jan. 7, 2013
 S A V Renown 3439

Lot **Six (6) Units of Semen**
30 Male IMP 9969W 1644747 Mar. 28, 2009
 S A V 707 Rito 9969

EPDS	BW	WW	YW	MILK	CE
	2.8	70	127	20	-2.0

EPDS	BW	WW	YW	MILK	CE
	6.1	58	114	16	-11.0

S RITO 707 OF IDEAL 3407 7075
 IDEAL 3407 OF 1418 076
 S A V 8180 TRAVELER 004
D S A V BLACKCAP MAY 4136
 S A V MAY 2397

S RITO 707 OF IDEAL 3407 7075
 IDEAL 3407 OF 1418 076
 PAPA EQUATOR 2928
D BR POLLY 8077-472
 VDAR POLLY 8077

Semen is stored at Bar 5 Stock Farms , Markdale, ON.
 Offered by Vissers Angus

Semen is stored at Bar 5 Stock Farms , Markdale, ON.
 Offered by Vissers Angus



S A V 707 Rito 9969



Lot
31

Five (5) Packages of Five Units of Semen

MICH Wheatland Hicaliber 7197E

Male MICH 7197E 2014219 Feb. 20, 2017

EPDS	BW	WW	YW	MILK	CE
	5.4	63	100	24	1.0

DAMERON FIRST CLASS

EXAR PIT BOSS 409

S EXAR CLASSEN 1422B

D EXAR HIGHROSE 84026

EXAR PRINCESS 2006

CURTIS HIGHROSE 807

Hicaliber is quickly becoming a mainstay sire for many programs. After being declared Supreme Champion Bull of the 2019 Toronto Royal and Champion Angus Bull of 2018, he has gone on to prove his worth as a breeding bull. The reports we have received this past year have all been very positive. The high selling heifer calf of the 2020 Falls View Sale was a Hicaliber heifer that created a lot of interest and selling to Casey Gavin of PEI for \$41,000. His sons will be featured in the Mid Western Bull Sale and are developing nicely, carrying the same length and depth of body Hicaliber is known for.

Limited amounts of semen will be offered in 2021.

Semen is stored at Bow Valley Genetics, AB..

Offered by Premier Livestock, Mainstream Genetics, Hasson Livestock, Dudgeon Cattle Co. and MKC



Premier Pride 015

Hicaliber daughter, High Seller in 2020 Falls View Sale.



IRCC

Lot
32

Five (5) Packages of Five Units of Semen

Premier Fusion 809F

Male PLS 809F 2026377 Jan. 12, 2018

EPDS	BW	WW	YW	MILK	CE
	1.6	54	95	25	-1.0

S A V BRILLIANCE 8077

BRUIN UPROAR 0070

S DAMERON FIRST IMPRESSION

D PREMIER GEORGINA 421

DAMERON NORTHERN MISS 3114

QVS GEORGINA 0051

The Fusion calves are stamped with the same kind of look and muscle shape as he himself has. Fusion was the feature bull calf of the 2018 Falls View Sale. His first calf crop has caught the attention of many. A son, Premier Rip, was the absolute standout of our 2020 calf crop and the feature of the 2020 sale, where a 1/2 interest commanded \$20,000, selling to Loyal Farms. If you like cattle that have that extra look while maintaining real world base width along with tremendous feet, Fusion is a must use for 2021. Limited amounts of semen will be offered in 2021.

Semen is stored at Bow Valley Genetics, AB..

Offered by Premier Livestock



Premier Queenette 20H
Fusion Daughter



Premier Rip 29H
Fusion Son



Lot 33A Package of Three (3) IVF Embryos
Musgrave Crackerjack X KR Lady May 4382

EPDS	BW	WW	YW	MILK	CE
	0.0	58	109	32	10.5

- S** MUSGRAVE CRACKERJACK
 - MUSGRAVE 316 STUNNER
 - MUSGRAVE RITO JET A649
 - K R GAVEL 1057
- D** KR LADY MAY 4382
 - WK LADY MAY 2347

KR Lady May 4382 is one of the best Angus cows in the breed right now for conformation, structure and udder quality! The mating of KR Lady May 4382 and Musgrave Cracker Jack is one of the great matings for muscle, performance and overall eye appeal! **Guaranteeing one (1) pregnancy, if implanted by a certified technician. Embryos are stored at Alta Genetics, AB.**
Offered by Jim J. Henderson

Lot 33B Package of Three (3) IVF Embryos
Bar-E-L Natural Law 52Y X KR Lady May 4382

PE EPDS	BW	WW	YW	MILK	CE
	2.4	56	106	30	6.0

- S** BAR-E-L NATURAL LAW 52Y
 - S A V BISMARCK 5682
 - BAR-E-L MAGNOLIA 143K
 - K R GAVEL 1057
- D** KR LADY MAY 4382
 - WK LADY MAY 2347

This mating of KR Lady May 4382 and Bar-E-L Natural Law is a mating of two of the best maternal genetic combinations in the Angus breed today! I'm so excited to see this mating come to life! **Guaranteeing one (1) pregnancy, if implanted by a certified technician. Embryos are stored at Alta Genetics, AB.**
Offered by Jim J. Henderson

Lot
33C

Package of Three (3) IVF Sexed Females Embryos

Musgrave Boulder X KR Lady May 4382

PE EPDS	BW	WW	YW	MILK	CE
	1.7	57	109	40	5.0

HOOVER DAM

S MUSGRAVE BOULDER

MILL BRAE SA JAUNTY 3079

D KR LADY MAY 4382

K R GAVEL 1057

WK LADY MAY 2347

This mating of KR Lady May 4382 and Musgrave Boulder are female sexed embryos and is one of my favourite matings on the stand point of an embryo that has the potential of producing a superior donor cow prospect!

Guaranteeing one (1) pregnancy, if implanted by a certified technician. Embryos are stored at Alta Genetics, AB.

Offered by Jim J. Henderson



Musgrave Crackerjack
Sire of Lot 33A Embryos



Bar-E-L Natural Law 52Y
Sire of Lot 33B Embryos



Musgrave Boulder
Sire of Lot 33C Embryos



Lot
34A

Two (2) Packages of Five Units of Semen

Musgrave 316 Stunner

Male IMP 1676D 1995252 Feb. 19, 2016

EPDS	BW	WW	YW	MILK	CE
	0.2	68	119	23	8.0

S LD CAPITALIST 316

CONNELY CAPITALIST 028

LD DIXIE ERICA 2053

D MCATL BLACKBIRD 831-1378

MCATL PURE PRODUCT 903-55

MCATL BLACKBIRD 1378-573

**Semen is stored on farm.
Offered by Harprey Angus**



Lot
34B

Two (2) Packages Of Five Units of Semen

Colburn Primo 5153

Male IMP 5153C 1952445 Jan. 3, 2015

EPDS	BW	WW	YW	MILK	CE
	3.8	55	88	5	4.0

S DAMERON FIRST CLASS

EXG RS FIRST RATE S903 R3

DAMERON NORTHERN MISS 3114

D SILVEIRAS SARAS DREAM 1339

SILVEIRAS STYLE 9303

EXG SARAS DREAM S609 R3

**Semen is stored on farm.
Offered by Harprey Angus**

2019

2019

Master
an A

CANADIAN

terfee
Alltech co

CA
W A

W

WESTERN
BITION



Lot **Two (2) Packages Of Ten Units of Semen**
34C **Young Dale Jullian 64E**
Male YDF 64E 1975693 Feb. 8, 2017

EPDS	BW	WW	YW	MILK	CE
	-0.3	56	103	23	9.0

S YOUNG DALEJULLIAN 153Z
YOUNG DALE JULIAN 108X
S A V MADAME PRIDE 0261

D YOUNG DALE RUBY 53B
YOUNG DALE NOZEKA 2Z
YOUNG DALE RUBY 28T

Julian 64E is an outcross sire that carries a negative birth weight EPD with explosive growth. He transmits phenomenal hair, a sound structured body with as thick of a top line as you'll see. Use 64E for calving ease, sound feet and performance. He was the \$31,000 second high selling bull of the past Young Dale bull sale.

Semen is stored at Bow Valley Genetics, AB.
Offered by Harprey Angus



Harprey Birdie 62H
Daughter of Young Dale Julian 64E



Harprey Jullian 37G
Son of Young Dale Julian 64E



Lot
35

Two (2) Packages of Five Units of Semen

Mc Cumber Tribute 702

Male IMP 7E 2135467 Jan. 9, 2017

EPDS	BW	WW	YW	MILK	CE
	-1.1	56	110	31	13.0

S O C C EMBLAZON 854E
MC CUMBER TREMENDOUS 2008
 O C C DIXIE ERICA 960H

D O C C MISSING LINK 830M
LASSIE 113 OF MC CUMBER
 LASSIE 935 OF MC CUMBER

Do you want something that nobody else will have in their herd??? Well here is your chance. Mc Cumber Tribute is a bull that is backed by a strong maternal line of cows that have great udders, and stand on tremendous feet and legs. He will offer calving ease and added growth to your next calf group. Not to mention a little extra style. From what we understand semen will be limited in Canada. Take advantage of this opportunity as this may not come along again.

**Semen is stored at Alta Genetics, AB.
 Offered by Knock Out Cattle Co.**



Blair's Mercedes 555h
Tribute Daughter



Blair's Shake That 579H
Tribute Daughter



Sankeys Justified 101

Lot 36 **Ten (10) Units of Semen**
 Sankeys Justified 101
 Male IMP 101Y 1762026 Jan. 16, 2011

Lot 37 **Two (2) Packages of Five Units of Semen**
 Sealin Creek Eric 5Y
 Male PAK 5Y 1607395 Jan. 24, 2011

EPDS	BW	WW	YW	MILK	CE
	4.8	62	107	25	-9.0

EPDS	BW	WW	YW	MILK	CE
	5.0	57	106	31	-3.0

- S SANKEYS LAZER 609 OF 6N
 EXAR LUTTON 1831
 ROTH ELDORENE 1195
- D SANKEYS ERICA 525
 DAJS ALL STAR M243
 EXARA ERICA 6338

- S BLACKTOF ERIC 15S
 BLACKTOF ERICA 27K
 ANGUS ACRES TOM BOY 64D
- D ADELPHI ELINE 37K
 ADELPH ELINE 10Z

Semen is stored at Alta Genetics, AB.
 Offered by Z Bar Angus

We are offering 10 doses of the ROV Show Bull of the Year in 2012! Justified has bred and delivered champions, high sellers and very good bulls and females all across North America. This now deceased sire is one to add to your semen tank while you can. The semen is in limited supply, get a hold of this frozen opportunity! Semen is stored at Alta Genetics, AB.
 Offered by Justamere Ranches



Sealin Creek Eric 5Y



Z-Bar Rosebud Lass 23E
 Eric Granddaughter



Z-Bar Eric 21C
 Eric Son

Lot
38A

Two (2) Units of Semen

Camilla Chance 37T

Male JST 37T 227271 Apr. 29, 1962

EPDS	BW	WW	YW	MILK	CE
	-0.1	-12	-17	7	-12.0

BLACKMAN OF SOUTHAVEN 2

BELLE VALLEY LOUIS 8

S BONNIE CHANCE BLACKMAN 32

D CAMILLA ANNE

BONNIE CHANCE BEULAH 2

CAMILLA MARY ANNE



Camilla Chance 37T, better known as Canadian Colossal, is one of the breed's most influential sires and he and his progeny have dominated the breed in performance and growth. Colossal himself scored a 122 weaning index as well as a WPDA index of 127 while on test at the Alberta Federal Provincial Program Test. This foundation sire lived to the age of 14 and weighed over 2600 lbs. He sired over 23,000 sons and daughters, today that number would be out of this world when you consider the limited use of AI in his lifetime. Called the "Million Dollar Bull" Colossal earned the title of Certified Meat Sire and is one of the bulls that truly influenced the Angus breed in a positive manner.

Semen is stored at Alta Genetics, AB.
Offered by LLB Angus

Lot
38B

Five (5) Units of Semen

Royle-Head Right Time 27E

Male PCH 27E 816868 Jan. 30, 1995

EPDS	BW	WW	YW	MILK	CE
	4.5	45	78	17	-6.0

N BAR EMULATION EXT

S LEACHMAN RIGHT TIME

LEACHMAN ERICA 0025

PATTON ENTICER

D ROYLE-HEAD ROSEBUD 42C

KBJ ROSEBUD 85X

One of Leachman Right Time's best sons. The progeny of Right Time 27E are extremely correct individuals. Numerous daughters have been purchased from LLB and have gone on to become successful show heifers. The 2006 Royal Grand Champion Female was from a Right Time 27E dam purchased by Legend Lane Angus in Ontario. The influence of Right Time 27E at LLB is immeasurable, he shows in the tabulation of many of our top producing females. Like his sire has proven, progeny of 27E just get better with age.

Semen is stored at Alta Genetics, AB.
Offered by LLB Angus

Lot
38C

Five (5) Units of Semen

Ronan Tex 56A

Male GOF 56A 728964 Mar. 23, 1991

EPDS	BW	WW	YW	MILK	CE
	3.4	36	58	16	-4.0

ANGUS ACRES TEXAS TEA 19M

S ANGUS ACRES TEX 16S

ANGUS ACRES STARTELL 76K

FAIRMAC BESTMAN 89'84

D RONAN BLACK IDA 57U

RONAN BLACK IDA 32N

Mature weight - 3100 lbs at seven years of age. Tex 56A is undoubtedly the best straight Canadian bred with a long serving history - in fact his progeny have been featured in LLB sales for 28 years. He is proven to sire moderate birth weight calves that are highly



productive, easy fleshing, fast growing and structurally correct. Tex 56A has out lasted many different fads in the Angus industry and he is maybe more influential and popular now than ever before. Most of our females have some influence of Tex 56A in their pedigree.

Semen is stored at Alta Genetics, AB.
Offered by LLB Angus



Black Angus
 RESERVE
 INTERMEDIATE
 CALF
 CHAMPION
 FEMALE
 CANADIAN WESTERN
 Agribition
 2018
 SPONSORED BY
 FORTY EIGHT
 LUMBER, SA

**Lot
39**

**Package of Five (5) IVF Embryos
 LD Grazer 7090 X Brooking Beauty 8138**

PE EPDS	BW	WW	YW	MILK	CE
	2.8	65	117	24	3.0

S LD GRAZER 7090

BASIN PAYWEIGHT 1682

D BROOKING BEAUTY 8138

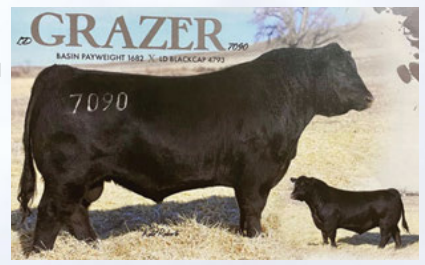
EXAR CLASSEN 1422B

LD BLACKCAP 4793

BROOKING BEAUTY 333

We are very happy to consign the first genetics to hit the market off of one of our newest donors, Brooking Beauty 8138. 8138 is a powerful made, beautifully profiling daughter of the highly productive and sought after Brooking Beauty 333 that continues to produce high dollar progeny for the Morrison's. 333's progeny in two calf crops have sold for \$57,500, \$45,000, \$36,000, \$31,000, \$26,500, \$23,500, \$20,000. Beauty 333 embryos have brought up to \$6,000. 8138 was successfully shown and was Reserve Division at Agribition as a calf. We have retained her first daughter by Leading Edge and can't wait to get more of her influence into our herd. LD Grazer is probably going to be the next star at Musgrave Angus. He combines some of the Angus breed's greatest individuals, Basin Payweight 1682 and Sitz Upward. His well balanced EPD profile puts him as a high growth sire with strong \$value indexes and very acceptable calving ease. We really feel this mating could be special.

**Embryos qualified for Canada and the USA. Stored at Bow Valley Genetics.
 Offered by Dusty Rose Cattle Co.**



LD Grazer 7090
Sire of Embryos



Brooking Beauty 333
Dam of Brooking Beauty 8138



Brooking Beauty 8062
Maternal sister to Brooking Beauty 8138



Maternal sister to Brooking Beauty 8138



S A V 004 Density 4336
Sire of Embryos

Lot
40

Package of Three (3) Embryos

S A V 004 Density 4336 X Northern View Ruth 82Z

PE EPDS	BW	WW	YW	MILK	CE
	3.0	54	101	28	6.0

S S A V 004 DENSITY 4336

S A V 8180 TRAVELER 004

S A V MAY 7238

D NORTHERN VIEW RUTH 82Z

SITZ UPWARD 307R

NORTHERN VIEW RUTH 84S

Ruth 82Z is proving to be a very productive cow for us, as well as a great donor. We knew that when she sold in the Power And Perfection Sale at CWA we had to own her. She is a cow that excels in phenotype, udder quality, fertility and production. Her daughters have been features in our last two Female Focus production sales. Density needs no introduction as one of the great female makers in the Angus breed. His daughters are the foundation of our herd and is a bull we keep using. We have seen how good this mating is and are confident in the progeny.

**Guaranteeing one (1) pregnancy, if implanted by a certified technician.
Embryos are stored at Bow Valley Genetics, AB.**

Offered by J Square S Angus



J Square S Ruth 906G
Full Sibling to Embryos



Conley South Point 8362
Sire of Lot 41A Embryos

Lot 41A Package of Three (3) Embryos
Conley South Point 8362 X Triple L J&S Forever Lady 301Y

EPDS	BW	WW	YW	MILK	CE
	0.6	51	94	28	11.5

S STEVENSON TURNING POINT
CONLEY SOUTH POINT 8362
P R LADY 909 4200-587

D HF TIGER 5T
TRIPLE L J&S FOREVER LADY 301Y
GDAR FOREVER LADY 9136

Forever Lady 301Y is writing a great story here at J Square S. She is a daughter of the prolific GDAR Forever Lady 9136 who has had a huge impact in the herds of Eastondale Angus and Johnson Livestock. Lady is one of our go to donors and currently has 22 calves registered. Her progeny always rise to the top. These embryos sired by Conley South Point and Pleasant Valley Lute, truly compliment 301Y.
Guarantee one (1) pregnancy per mating, if implanted by a certified embryo technician.
Embryos are stored at Bow Valley Genetics, AB.
Offered by J Square S Angus

Lot 41B Package of Three (3) Embryos
Pleasant Valley Lute 1207 X Triple L J&S Forever Lady 301Y

P.E EPDS	BW	WW	YW	MILK	CE
	1.7	53	98	23	7.5

S PLAINVIEW LUTTON E102
PLEASANT VALLEY LUTE 1207
CHERRY KNOLL ELSA 8014

D HF TIGER 5T
TRIPLE L J&S FOREVER LADY 301Y
GDAR FOREVER LADY 9136



J Square S Forever Lady 905G
Maternal Sibling to Lot 41A embryos, Full Sibling to Lot 41B Embryos



Lot
42

Package of Two (2) Embryos

Kilmaurs Daquantae 1H X W C C Forever Lady W16

PE EPDS	BW	WW	YW	MILK	CE
	3.2	40	70	18	0.5

S KILMAURS DAQUANTAE 1H
R R DAQUANTAE 789E
KILMAURS MISS KELLY

D W C C FOREVER LADY W16
S A V 8180 TRAVELER 004
WCC FOREVER LADY S6

IMP 16W is an excellent Traveler bred female and top seller from the famous Wilson Cattle Co Forever Lady family in Indiana. Daquantae 1H was a \$27,000 high seller bull in the 1999 when one-half interest sold to Geis Angus. He sires females that make terrific cows with exceptionally good udders and have produced offspring among the very best at LLB and at Geis, many are ELITE DAMS. The dam of the \$70,000 top selling bull in our 2009 spring sale was a Daquantae 1H daughter and he also appear in the pedigrees of many of our herd sire. Watch for his daughters, they are the good ones. **Guaranteeing one (1) pregnancy, if implanted by a certified technician.** Embryos are stored at Davis-Rairdan Embryo Transplants Ltd., AB. Offered by LLB Angus



Kilmaurs Daquantae 1H
Sire of Embryos

2007



ONTARIO
TOYOTA
DEALERS
Real People Selling Great Cars

Canadian
Beef Show



Lot
43

Package of Five (5) Embryos

Figure 8 Angus Tom Boy 509R X LLB Lady Burgess 447S

PE EPDS	BW	WW	YW	MILK	CE
	1.6	30	50	14	5.0

S FIGURE 8 ANGUS TOM BOY 509R

ADELPHI TOM BOY 20H
FIGURE 8 ANGUS LADY 604J

D LLB LADY BURGESS 447S

HF FREE WHEELER 191N
DOUBLE J BURGESS 447D

LLB Lady Burgess 447S was an outstanding Free Wheeler 191N daughter that went on to be the 2007 Royal Winter Fair Supreme Champion for Dudgeon Livestock. Tom Boy 509R is a straight Canadian bred herd sire that was our \$60,000 top seller selected at the 2007 Agribition Masterpiece Sale. **Guaranteeing two (2) pregnancies, if implanted by a certified technician. Embryos are stored at Davis-Rairdan Embryo Transplants Ltd., AB. Offered by LLB Angus**



Figure 8 Angus Tom Boy 509R
Sire of Embryos



Lot
44

Nine (9) Units of Semen

S A F 598 Bando 5175
Male IMP 05175E 994198 Mar. 11, 1995

EPDS	BW	WW	YW	MILK	CE
	4.7	54	99	31	4.0

S BON VIEW BANDO 598
TEHAMA BANDO 155
BON VIEW DORA 56

D S A F ROYAL LASS 1002
V D A R NEW TREND 315
S A F ROYAL LASS 6089

Semen stored at Millennium Genetics , AB
Offered by Cinderlyn Farms Ltd.

Bid *online*
on DLMS

Internet Bidding Available

D | L | M | S
www.dlms.ca

For more information call DLMS:
Mark Shologan 780.699.5082 or
DLMS Purebred Team 780.991.3025

Lot Two (2) Packages of Ten Units of Semen

45A Male IMP 2353Z 1890331 Apr. 26, 2012
 Silveiras S Sis GQ 2353

EPDS	BW	WW	YW	MILK	CE
	3.0	49	80	15	2.0

- S SILVEIRAS STYLE 9303
 - GAMBLES HOT ROD
 - SILVEIRAS ELBA 2520
 - B C LOOKOUT 7024
- D K N C CABIN CREEK SANDY 804
 - K N C CABIN CREEK SANDY

Semen is stored at Alta Genetics , AB
 Offered by Hollinger Land and Cattle and CSI Angus



Lot 45B Male IMP 410H 1140680 Jan. 19, 1999
 Three (3) Units of Semen
 F A R Krugerrand 410H

EPDS	BW	WW	YW	MILK	CE
	1.9	49	99	16	2.0

- S KRUGERRAND OF DONAMERE 490
 - CAVALIER OF DONAMERE 978
 - DONAMERE BACHEL BEAUTY 288
 - G M A R HI SPADE 039
- D F A R ERIANNA 286F
 - F A R ERIANNA 481D

Semen is stored on farm, SK.
 Offered by Hollinger Land and Cattle

Lot 45C Male IMP 309A 1876432 Oct. 18, 2013
 Ten (10) Units of Semen
 GCC Business Elite

EPDS	BW	WW	YW	MILK	CE
	2.4	61	93	11	5.0

- S DAMERON FIRST CLASS
 - EXG RS FIRST RATE S903 R3
 - DAMERON NORTHERN MISS 3114
 - NORTHERN IMPROVEMENT 4480 GF
- D J&J QUEEN 414
 - J&J QUEENIE 9206

Semen is stored on farm, SK.
 Offered by Hollinger Land and Cattle



Young Dale Believe 46B



Young Dale Grace 126Z

Dam of Believe, and one of the most influential Angus cows in Canada

Lot
46 **Twelve (12) Units of Semen**
Young Dale Believe 46B
Male YDF 46B 1791677 Feb. 11, 2014

EPDS	BW	WW	YW	MILK	CE
	4.3	77	116	12	-2.0

Lot
47 **Three (3) Units of Semen**
S A V Heavy Hitter 6347
Male IMP 6347S 1493580 Mar. 6, 2006

EPDS	BW	WW	YW	MILK	CE
	3.8	45	80	20	1.0

- S** YOUNG DALE XCALIBER 32X
BROOKMORE TIBBIE 222T
- D** YOUNG DALE GRACE 126Z
YOUNG DALE PANARAMA 66T
YOUNG DALE GRACE 19T

Semen is stored on farm.
Offered by Leela Farms

- S** S A V 8180 TRAVELER 004
BOYD FOREVER LADY 8003
- D** S A V BESSIE HEIRESS 1184
S A F 598 BANDO 5175
S A V BESSIE HEIRESS 8067

Semen is stored on farm and is not exportable.
Offered by Double L Angus

We have three straws for the February Freeze sale from S A V Heavy Hitter 6347, he is the most impressive son of S A V Traveler. He is long made, deep made and has good EPDs to go with it. Here is an opportunity to get semen of Heavy Hitter that is hard to come by!



S A V Heavy Hitter 6347



S A V Bismarck 5682

Lot **Two (2) Units of Sexed Male Semen**
48 Male IMP 5682R 1369591 Feb. 1, 2005

Lot **Three (3) Units of Semen**
49 Male IMP 036Z 928540 Feb. 2, 1990

EPDS	BW	WW	YW	MILK	CE
	0.0	52	89	21	12.0

EPDS	BW	WW	YW	MILK	CE
	1.4	34	65	26	7.0

S G A R GRID MAKER
 G D A R TRAVELER 044
 G A R PRECISION 2536
 SCHOENES FIX IT 826
D S A V ABIGALE 0451
 S A V ABIGALE 6062
 Semen is FOB to Alta Genetics, AB.
 Offered by Willow Springs Stock Farm

S V D A R NEW TREND 315
 A A R NEW TREND
 V D A R LUCY 704
 K&K TOP GUN
D B/R BLACKCAP EMPRESS 76
 QLC A70 BLKCP EMPRESS E43T
 Semen is FOB to Alta Genetics, AB.
 Offered by Willow Springs Stock Farm



B/R New Design 036



Alberda Traveler 416

Lot Two (2) Packages of Three Units of Semen

Alberda Traveler 416

50 Male IMP 6446D 876382 Jan. 25, 1994

EPDS	BW	WW	YW	MILK	CE
	3.6	31	64	26	1.0

Q A S TRAVELER 23-4

S D H D TRAVELER 6807

BEMINDFUL MAID D H D 0807

V D A R NEW TREND 315

D ALBERDA QUEEN KIMBERLY 222

ALBERDA QUEEN KIMBERLY 169

Semen is FOB to Alta Genetics, AB.
Offered by Willow Springs Stock Farm

Lot Two (2) Packages of Five Units of Semen

H A Image Maker 0415

51 Male IMP 0415K 1195032 Jan. 23, 2000

EPDS	BW	WW	YW	MILK	CE
	0.2	60	98	36	12.0

RR HERO 6267

S HERO 6267 OF R R 2418

R R EVERELDA ENTENSE 0413

H 96 RITO 2100 7371

D H A RITO BLACKCAP 9038

H 96 BLACKCAP 3835

Semen is FOB to Alta Genetics, AB.
Offered by Willow Springs Stock Farm



H A Image Maker 0415



Lot
52

Offering The Right To Flush

Red Double MM Bayberry 1Z

Female MMJ 1Z 1655871 Jan. 20, 2012

PE EPDS	BW	WW	YW	MILK	CE
	0.6	31	48	24	3.0

RED RMJ REDMAN 1T

RED S- SLY 26S

S RED LAZY MC CC DETOUR 2W

D RED S- BAYBERRY 111X

RED LAZY MC BESS 12S

RED S- BAYBERRY 111U

If you were to ever chat with any of us here at Horner Cattle Company and were to ask us to name some of the best cows that have ever called Horner Cattle Company home, Bayberry would be near the top of our list. We're excited to bring you this opportunity for the February Freeze event. Bayberry was admired when we showed her as a bred in 2013 and later as a mature cow in 2017 for her extreme depth of rib, length of spine, extension from hooks to pins while being tied together in a heavily muscled, complete and moderate package. The daughters we've retained have been excellent breeding pieces and udder quality is bred deeply into this cow family. While only being out for two fall show seasons Bayberry was twice selected as the Reserve Champion Female at Manitoba Ag Ex, the Reserve Royal Lady Champion Heifer Calf Champion and was the Reserve Champion Mature Female at Agribition where she was admired by many with her bull calf at side. Her bull calf that was shown at side was selected as the Bull Calf Champion at Ag EX and has gone on to be a valuable breeding piece. Fast forward to modern day, where we just sold a powerful daughter by Red Combust Juggernaut at the Keystone Classic as a high seller for \$9,000 to Kueber Farms and Lyseng Land and Cattle. In the past Bayberry has proven to be a flush quality cow in terms of numerous viable and quality embryos. Take this opportunity to acquire these genetics and put your own twist on the mating of your choosing.

Offering full right to flush with no cap on embryos. You get them all. Six (6) guaranteed embryos. Conventional flush to take place on farm with Embryo Genetics, Morden MB. Flush to take place from early-mid April 2021

Offered by Horner Cattle Company



Red LHCC Bayberry 022H

\$9,000 high selling daughter at Keystone Classic



Sakic X Bayberry 1Z

Ag Ex Bull Calf Champion



Red Double MM Bayberry 1Z with Calf

2017 Ag Ex Reserve Grand Champion Female

February Freeze 2021 • Live on DLMS • February 20, 2021



Lot
53A **Package of Four (4) Embryos**
Red Six Mile Signature 295B X Red WCR Miss Cora De 867Z

PE EPDS	BW	WW	YW	MILK	CE
	1.3	34	61	21	5.0

S RED SIX MILE SIGNATURE 295B
RED SELMA OF SIX MILE 358X

D RED WCR MISS CORA DE 867Z
RED LAZY MC CC DETOUR 2W
RED WILBAR CORA 443P

WCR Cora 867Z is currently the cornerstone donor for Blair's and you can expect to hear more about this Powerful Detour 2W x Cora 443P female that was originally purchased from the Wildcat Creek dispersal. **Guaranteeing two (2) pregnancies, if implanted by a certified technician. Embryos are stored at Bow Valley Genetics, AB.**
Offered by Blairs.Ag Cattle Co.



Red Six Mile Signature 295B
Sire of Embryos



Lot
53B **Package of Five (5) Embryos**
Red Six Mile Signature 295B X Red Blairs Nice 25Y

PE EPDS	BW	WW	YW	MILK	CE
	1.5	32	53	15	2.0

S RED SIX MILE GRAND SLAM 130Z
S RED SIX MILE SIGNATURE 295B
RED SELMA OF SIX MILE 358X

D RED BLAIRS NICE 25Y
RED WILBAR LATITUDE 235W
RED JB WANNABE NICE 9084

A neat opportunity to get genetics off the moderate made, powerfully constructed Blair's Nice 25Y donor. A maternal sib to these embryo's sold to Timber Creek in Texas in the Opportunity Knocks 2020 sale. 25Y is deceased and these embryos are unique and rare.
Guaranteeing two (2) pregnancies, if implanted by a certified technician. Embryos are stored at Bow Valley Genetics, AB.
Offered by Blairs.Ag Cattle Co.



Red Six Mile Signature 295B
Sire of Embryos



Lot
54

Three (3) Packages of Ten Units of Semen

WLB John Wayne 493G

Male WLB 493G BPG1288276 Feb. 13, 2019

EPDS	BW	WW	YW	MILK	CE
	4.8	97.7	155.6	28.8	5.1

S SFM STOUGHTON 18D

NCB COBRA 47Y

SFM BS 119B

D WLB 52Z TARA 3612D

MRL EL TIGRE 52Z

JFRS MS 43Y

Maple Lake Stock Farms is excited to add these rock solid genetics to our program. A thicker top would be hard to find. The exceptional jump muscle definition is impressive. After considerable deliberation we have decided to market WLB 493G John Wayne as an AI sire. Take a moment to watch the video of this extremely powerful bull. He moves like a cat. Impressive thickness. The traits to strengthen and raise your production another notch. The 43Y dam has rock solid genetics, as can be seen in the many successful members of her family.

Semen is stored at Bow Valley Genetics, AB.

Offered by Maple Lake Stock Farms



Lot
55

Three (3) Packages of Ten Units of Semen

R Plus Uppercut 6103D

Male LRPS 6103D BPG1189994 Feb. 12, 2016

EPDS	BW	WW	YW	MILK	CE
	2.7	96.5	153.5	25.6	9.2

S MR TR HAMMER 308A ET

MR NLC UPGRADE U8676

SVF/HS EXPECTING A DREAM

D MISS R PLUS1017Y

R PLUS MCSTEAMY 8028U

TRIPLE C POWER TIME M67K

- Outcross pedigree with hair
- Impressive EPD profile with an astounding YW, top 3% API & top 1% TI
- Will have progeny highlighting multiple programs in sales this spring
- Extremely sound & highly marketable

Semen is stored at Bow Valley Genetics, AB.

Offered by SIBL Simmentals, CRM Simmentals and R Plus Simmentals



BLI Fortune 915G
Uppercut daughter



BLI/RNBW Stillwater 31H
Uppercut son



RF Haymaker 018G
Uppercut son



Miss R Plus 9081G
Uppercut daughter



GF Emerald 301H
Dam of Embryos

Lot
56

Package of Three (3) Embryos

LLW CARD True North G71 X GF Emerald 301H

PE EPDS	BW	WW	YW	MILK	CE
------------	----	----	----	------	----

S LLW CARD TRUE NORTH G71
GSC GCCO DEW NORTH 102C
COX'S JOYS PRINCESS711E

D GF EMERALD 301H
LLSF PAYS TO BELIEVE ZU194
GF EMERALD 301E

The high selling featured Simmental of the 2020 Falls View sale that we are excited to offer the opportunity to get in on what will be an incredible ride. We love how this female is designed, with power and extension tied up in a very complete yet unique package. The embryos are sired by a hot off the shelf sire, "True North," who was on display at the NWSS in 2019 and we feel has the potential to compliment Emerald and add to what is already a hard to come by sought after pedigree, stacking Pays To Believe and Bullseye.

Guaranteeing one (1) pregnancy, if implanted by a certified technician.

Offered by Alton Century Farms Ltd. and Gilchrist Farms



GF Emerald 301E
Dam of GF Emerald 301H



Lot
57

Package of Three (3) Embryos

JBSF BERWICK 41F X LLSF FLIRT F195

PE EPDS	BW	WW	YW	MILK	CE
	3.8	73.3	108.3	18.6	9

S JBSF BERWICK 41F

ROCKING P LEGENDARY C918

D LLSF FLIRT F195

W/C RELENTLESS 32C

JBSF 402B

TJSC ONYX 44B

Here is an opportunity to get in on the ground floor and have the first sired JBSF Berwick 41F progeny in Canada. The dam, LLSF Flirt F195, comes from a long line of exceptional donor females. She is from the Onyx cow family which has produced endless champions and breed enhancing progeny. The females backing F195 run deep and strong. With the all powerful Miss Werning KP 8543U, being the most valuable cow in the Simmental breed on the top side. F195 herself is as stout, square hipped and as sound as one could be made, making her right for the times and for generations to come. These embryos are sired by one of the most dynamic Simmental bulls, JBSF Berwick 41F. They are the only Berwick sired progeny to be brought to Canada. The Berwick bull commanded a hammer price of \$109 000 for 1/8 interest. The sheer quality, mass, squareness of build and near perfect structural design of Berwick is simply put, he will be a sire of impact. By not having Broker, Profit, Lock n Load, Captain Scream or Loaded Up in his pedigree the mating flexibility is endless.

Guaranteeing one (1) pregnancy, if implanted by a certified technician.

Embryos are stored at EastGen, ON.

Offered by Alton Century Farms Ltd.



LLSF Flirt F195
Pictured as a calf



JBSF Berwick 41F
Sire of Embryos



TJSC Onyx 44B
Dam of LLSF Flirt F195



Wheatland Man O'War 907G

Lot Three (3) Packages of Three Embryos **58A** Wheatland Man O' War 907G X Ankony Miss Candace U056

EPDS	BW	WW	YW	MILK	CE
	4.6	78	112.7	29	5.2

- S** WHEATLAND MAN O' WAR 907G
- CCLT ALLIANCE 91C
- WHEATLAND LADY 519C
- STF MONTANA BLACK KF25
- D** ANKONY MISS CANDACE U056
- ANKONY MISS CANDACE P6

Ankony Miss Candace U056 has the longevity, fertility and performance that is at the forefront of the Simmental breed. Ankony Miss Candace U056's dam is a full sister of the legendary sire, Ankonian Red Caesar, which makes Ankony Miss Candace U056 Heterozygous for color! The mating of Wheatland Man O' War, the \$317,000 herd sire for Double Bar D Simmentals is going to have the highest return on investment you can find in the breed! **Guaranteeing one (1) pregnancy, if implanted by a certified technician. Embryos are stored at Davis-Rairdan Embryo Transplants Ltd., AB. Offered by Jim J. Henderson, Danny Hansen and Jay Anderson**

Lot Three (3) Packages of Three Embryos **58B** Springcreek Liner 56U X Ankony Miss Candace U056

P.E EPDS	BW	WW	YW	MILK	CE
	5.9	87.1	137.8	36.8	1.9

- S** SPRINGCREEK LINER 56U
- RCC/TCF LINE DRIVE M181
- NEVAS L93
- STF MONTANA BLACK KF25
- D** ANKONY MISS CANDACE U056
- ANKONY MISS CANDACE P6

Ankony Miss Candace U056 and Spring Creek Liner 56U is a mating that is going to leave daughters that will be in the herd longer than any other mating in the business. The bulls out of this mating will be big, thick and masculine herd bulls for the purebred or commercial industry. **Guaranteeing one (1) pregnancy, if implanted by a certified technician. Embryos are stored at Davis-Rairdan Embryo Transplants Ltd., AB. Offered by Jim J. Henderson and Jay Anderson**

Lot
58C

Three (3) Packages of Three Embryos
MRL Missile 138C X Ankony Miss Candance U056

PE EPDS	BW	WW	YW	MILK	CE
	4.9	87.8	128.3	27.8	3.5

S MRL MISSILE 138C

COME AS U R RED ROCKET
MRL MISS 2423Z

D ANKONY MISS CANDACE U056

STF MONTANA BLACK KF25
ANKONY MISS CANDACE P6

Ankony Miss Candace U056 and MRL Missile 138C is a solid mating of what the commercial industry is calling for. The females from this mating will be good footed, deep bodied, good haired cows with fertility and longevity to burn. The bulls from this mating will be born easy and grow and perform at the top of the pen. The extra muscle, hair and scrotal will make them easy to sell!
Guaranteeing one (1) pregnancy, if implanted by a certified technician. Embryos are stored at Davis-Rairdan Embryo Transplants Ltd., AB.
Offered by Jim J. Henderson and Jay Anderson



Ankony Miss Candace U056
Dam of Embryos



Cobra daughter out of Ankony Miss Candace U056



Springcreek Liner 56U
Sire of Lot 58B Embryos



RF Supercharged 9150G
Sire of Embryos

Lot
59 **Package of Three (3) Embryos**
RF Supercharged 9150G X Mader Lips Like Sugar 27C

PE EPDS	BW	WW	YW	MILK	CE
	3.2	84.7	131.6	23.2	9.4

S RF SUPERCHARGED 9150G
RF CAPACITY 742E
RF CERTAINLY FLIRTIN 202Z

D MADER LIPS LIKE SUGAR 27C
FBF1 COMBUSTIBLE
MADER P IRON SUGAR 7X

27C has quickly become a matron donor here! She physically has the credentials we look for being stout ribbed, big footed, great uddered, and can raise some dandy's. Her first daughter was the high seller in 2019 Ladies Night Sale for \$18,000, to Double Bar D. We also have an outstanding set of bull calves sired by National and Firebrand in the bull sale this spring, that will be leaders in their contemporary groups. Her pedigree speaks pretty true to quality when you incorporate our Ironsugar 7X female, onto the well known Combustible sire. Mated to \$130,000, RF Supercharged, (RF Capacity x RF 202Z,) should result in some of the hottest pedigreed progeny in the industry! Calves will be Homo Polled and black by parentage.

Guaranteeing one (1) pregnancy, if implanted by a certified technician.

Embryos are stored at Davis-Rairdan Embryo Transplants Ltd., AB.

Offered by Mader Ranches



Son of 27C



Daughter of 27C



SVS Dynasty 915G
Sire of Embryos

Lot
60

Package of Three (3) Embryos

SVS Dynasty 915G X Mader Opal 210B

PE EPDS	BW	WW	YW	MILK	CE
	4.9	89.4	132.5	25.2	5.7

RF CAPACITY 742E \ HP-HOP

HARVIE JDF WALLBANGER111X

S SVS DYNASTY 915G

D MADER OPAL 210B

WFL RED SAGE 506C

CG BLACK OPAL 652S

With over 30 "Opal 652S" influenced daughters in the herd, there is always one that shines to the top! Opal 210B is that cow! Her udder and foot are built exactly like her mommas, perfect suspension, great little teats, and very athletic. She offers that tremendous neck extension, is very straight in her lines, and can continue to raise calves that come to the top! No, this young female has never won a banner or sold for huge dollars through a sale, but the predictability has been enhanced through her production, and her genetic makeup has been carefully put together on this embryo mating to create \$\$ in her offspring! SVS Dynasty, (Capacity x WFL Sage,) is the maternal brother to the \$120,000 SVS Betts. Everyone needs to own an Opal!! Calves will be homo polled by parentage.

Guaranteeing one (1) pregnancy, if implanted by a certified technician. Embryos are stored at Davis-Rairdan Embryo Transplants Ltd., AB.

Offered by Mader Ranches



Son of 210B



Daughter of 210B



Lot 61A Package of Three (3) Embryos
CCLT Alliance 91C X Remington Miss Knight 63U

PE EPDS	BW	WW	YW	MILK	CE
	2.9	74.5	101.3	21	9.8

- S** CCLT ALLIANCE 91C
WS PILGRIM H182U
BROOKS SHINIA 1A
KN REMINGTON ON TARGET 2S
- D** REMINGTON MISS KNIGHT 63U
BAR 15 MISS KNIGHT78E-51G

Lot 61C Package of Three (3) Embryos
MRL Western Force 251B X Remington Miss Knight 63U

PE EPDS	BW	WW	YW	MILK	CE
	2.6	75.5	121.2	28.7	9.2

- S** MRL WESTERN FORCE 251B
MRL MISS 2543Z
KN REMINGTON ON TARGET 2S
- D** REMINGTON MISS KNIGHT 63U
BAR 15 MISS KNIGHT78E-51G

Lot 61B Package of Three (3) Embryos
PVF-BF BF26 Black Joker X Remington Miss Knight 63U

PE EPDS	BW	WW	YW	MILK	CE
	3.1	67.9	105.7	27.5	7.4

- S** PVF-BF BF26 BLACK JOKER
HART'S BLACK CASINO B408
PVF-BF MABELLE C131
KN REMINGTON ON TARGET 2S
- D** REMINGTON MISS KNIGHT 63U
BAR 15 MISS KNIGHT78E-51G

We are excited to be part of the 2021 February Freeze Sale and have opened the vault on a great set of embryos, with one of the greatest red blady cows of the breed, Remington Miss Knight 63U. The Knight cow family was one of the most sought-after cow families in both the Remington and Bar 15 Dispersal sales. With the most well known son out of that cow family being none other the breed changing bull, Lock 'n Load, with 63U being his full sister. She is a breed changer in her own right, with many daughters and granddaughters retained in the Early cow herd. One of them being a direct daughter of 63U that went on to be the Grand Champion Female in the Open Simmental Show and was named Reserve Over All Breeds in the Junior Show at the 2017 Royal Winter as a yearling. The females out of 63U are hard working, good producing cows. The three bulls mated to 63U in this sale need no introduction: Alliance, Black Joker and MLR Western Forces. With the progeny that they have produced combined with the power of the Miss Knight cow family, here is a great opportunity to buy some great genetics.

Guaranteeing one (1) pregnancy per mating, if implanted by a certified technician. Embryos are stored at Bow Valley Genetics. Offered by G R Simmentals



Lot
62

Three (3) Packages of Ten Units of Semen

W/C Bankroll 811D

Male RLD 811D BPTG1217569 Jan. 30, 2016

EPDS	BW	WW	YW	MILK	CE
	1.8	81.0	114.3	31.1	12.6

S W/C LOADED UP 1119Y

REMINGTON LOCK N LOAD 54U

AUBREYS BLACK BLAZE III

D MISS WERNING KP 8543U

WAGR DREAM CATCHER 03R

MISS WERNING 534R

Homo Polled Hetro Black Bankroll in person will stop you in your tracks. Muscular, athletic, well built, excellent feet with a look and presence that is second to none. His calves have exceeded extremely high expectations. Low birth weight, high growth and sound. The sons are powerful and rugged yet the females are angular and have an exceptional maternal look. He has already amassed an impressive list of high sellers and winners and his daughters are now in production and are looking great. Prime examples are 477F and 536F.

Semen is stored at Alta Genetics.

Offered by Double Bar D Farms



Double Bar D Bankroll 804F

\$52,500 Bankroll son at Brookslan Farms



Double Bar D Bette 477F

\$45,000 Bankroll daughter at Wheatland/Michelson



Pearl's Pics

Lot
63

Three (3) Packages of Ten Units of Semen

SVS Captain Morgan 11Z

Male TLAS 11Z BPTG766965 Jan. 3, 2012

EPDS	BW	WW	YW	MILK	CE
	5.6	89.6	141.9	24.1	6.8

S HARVIE JDF WALLBANGER111X
 SHS ENTICER P1B
 JDF PEPSI 61U

D SUNNYVALLEY BLK JENNA 88U
 RLA REDSTREAM 152S
 WLB 32H JENNA 360R

Without question Captain Morgan is one of, or the most influential bulls in the Simmental Industry in the last 8 years. His sons are still highly sought after and his daughter, now in production for many years, are producing the next generation off lead off red and black Simmental genetics. Semen is stored at Bouchard Livestock International, AB. Offered by Double Bar D Farms



Lot
64

Three (3) Packages of Ten Units of Semen

Rust Primetime 507G

Male RLD 507G BPTRS1314791 Feb. 24, 2019

EPDS	BW	WW	YW	MILK	CE
	-2.4	74.7	109.1	25.2	16.6

S W/C NIGHT WATCH 84E

CCR ANCHOR 9071B

MISS WERNING KP 8543U

D HARRELL ANGEL 5870C

YARDLEY HIGH REGARD W242

W/C MISS ANGEL 2870Z

Homo Polled Homo Black 7/8 Simmental

Once we laid eyes on Primetime we really wanted to own him, the lead off bull at Rust Mountain View Sale 2020. He was admired by many as their pick of the bull calves at Denver 2020. Primetime is very clean fronted but yet explodes into a wide topped and thick butted bull all tied together with a stellar set of EPDs, especially calving ease. He is strong footed and very athletic in his movement on a near flawless phenotype and backed by an incredible pedigree going back to 8543.

Semen is stored at Bow Valley Genetics, AB.

Offered by Double Bar D Farms



Lot
65

Three (3) Packages of Ten Units of Semen

KWA Law Maker 59C

Male KWA 59C PTG1152682 Jan. 17, 2015

EPDS	BW	WW	YW	MILK	CE
	3.9	84.1	137.0	32.7	6.5

S CDI AUTHORITY 77X

NF TRUMP S582

CDI MS CROCKET 88T

D KWA MS ROCK 14X

KWA RED ROCK 5T

KWA MS BARON 9U

Homo Polled

A rare opportunity to acquire Law Maker semen. His bulls continue to be very well received as being built right with having just enough ruggedness on a balanced set of EPDs. The daughters are angular with an abundance of middle with excellent feet and legs. We have many Law Maker daughters in production in the herd and they are developing into front pasture cows and already are producing like that.

Half semen interest is owned with Dr Everett More, Virden MB.

Semen is stored at Bow Valley Genetics, AB.

Offered by Double Bar D Farms



Lot
66

Three (3) Packages of Ten Units of Semen

Anchor D Motown 865E

Male ZDS 865E T1248299 Dec. 25, 2017

EPDS	BW	WW	YW	MILK	CE
	5.7	85.5	125.3	33.7	3.7

S FGAF FRENCH ATTACK 010C
SIBELLE DIRTY HARRY 25Z
VIRGINIAS JANE WEST

D FGAF PRECIOUS THING 402T
R-FIVE MALTESE
FGAF SHANTI 121P

We are just weaning Motown's first calf crop this fall and they are arguably the best sire group, so we are very pleased and excited. Motown is very moderate on a correct structure with an excellent foot but his progeny tend to out perform himself. His heifers are feminine and fancy with lots of rib and his bull calves are stout made, free moving with good structure. His daughters in the sale are Lots 28 and 29.

Qualified for CAN.

Semen is stored at Bow Valley Genetics, AB.

Offered by Double Bar D Farms



Lot
67

Three (3) Packages of Ten Units of Semen

MFI Jeremiah 9022

Male MFI 22W 721721 Mar. 28, 2009

EPDS	BW	WW	YW	MILK	CE
	7.3	70.8	98.1	42.3	0.1

S GIBBONS JEREMIAH

MFI WHISTLER 47L

RHY EVIE 62C

D MFI PETRA 2093

KN BEL WESTERN UNION 5Z

MFL ZAILA 8Z

Don't really know where to start with Juggernaut so I will keep it brief as his continued influence can do all the talking. He sires excellent bulls and females with his daughters being the backbone of our fleck cows here at Double Bar D.

Semen is stored at Bow Valley Genetics, AB.

Offered by Double Bar D Farms



Lot
68

Three (3) Packages of Ten Units of Semen

LFE McDavid 413C

Male LFE 413C BPG1148020 Jan. 16, 2015

EPDS	BW	WW	YW	MILK	CE
	7.2	94.4	140.2	28.9	1.4

S LFE GOTHAM 819Y

LFE THE DARK NIGHT 350U

D LFE HEAVEN SENT 30X

LFEBISS BLACKADVANCE 426U

LFE BEST LADY 47W

LFE BS MISS LEWIS 614S

Semen is stored at Alta Genetics, AB.
Offered by Spring Creek Simmentals



LFE McDavid 413C



LFE McDavid 413C



LFE Heaven Sent 30X



Tesla



Denali



Duramax



Lot
69A&B

Two (2) Packages of Four SimAngus Embryos

RF Merchant 481B X Red Cockburn Cora 133Y

PE EPDS	BW	WW	YW	MILK	CE
------------	----	----	----	------	----

S RF MERCHANT 481B

MR HOC BROKER

TLG FLIRTIN WITH YOU

D RED COCKBURN CORA 133Y

RED FINE LINE MULBERRY 26P

RED WILBAR CORA 443P

The powerful Cockburn Cora 133Y was purchased specifically to produce SimAngus embryo's with the Cora influence. We selected RF Merchant 481B as what we believed could be the perfect mating for Cora. These (8) embryo's are the very last of our Cora 133Y embryo's so take advantage of this rare opportunity.

Guaranteeing two (2) pregnancies per package, if implanted by a certified technician. Embryos are stored at Davis-Rairdan Embryo Transplants Ltd, AB. Offered by Blairs.Ag Cattle Co.



RF Merchant 481B
Sire of Embryos



Lot 70A Package of Three (3) Embryos
LT Landmark 5052 PLD X PZC Lily 5013 ET

PE EPDS	BW	WW	YW	MILK	CE
	-1.9	38	75	28	9.7

- S** LT LANDMARK 5052 PLD
 - LT RUSHMORE 8060 PLD
 - LT JENNY 3028 PLD
- D** PZC LILY 5013 ET
 - TR MR FIRE WATER 5792RET
 - THOMAS MS IMPRESSIVE 0641

This is a newer mating that has worked extremely well; PZC Lily 5013 ET has incredible selection of herd sire prospects in the 2021 PCC Bull Sale with a few of those leading herd sires. Being sired by LT Landmark 5052 PLD, making them full sibs to these embryos; low birth with more than added growth numbers. A superb opportunity to add quality genetics to any herd.

Guaranteeing one (1) pregnancy, if implanted by a certified technician. Embryos are stored at Bow Valley Genetics, AB. Offered by Prairie Cove Charolais



LT Landmark 5052 PLD
Sire of Lot 70A Embryos

Lot 70B Package of Three (3) Embryos
LT Sundance 2251 PLD X PZC Lily 5013 ET

PE EPDS	BW	WW	YW	MILK	CE
	0.1	48.5	97	26	6.0

- S** LT SUNDANCE 2251 PLD
 - LT LEDGER 0332 P
 - LT BALLET 9219 POLLED
- D** PZC LILY 5013 ET
 - TR MR FIRE WATER 5792RET
 - THOMAS MS IMPRESSIVE 0641

Large growth numbers come with LT Sundance 2251 PLD as he boosts top 2% WW and YW EPDs in the USA, as well as the top 1% for Scrotal in the entire herd book in the USA. A great combination of phenotype and EPD profile. If you want to add numbers to your program as well as being out of a two time Supreme Champion, this is your chance.

Guaranteeing one (1) pregnancy, if implanted by a certified technician. Embryos are stored at Bow Valley Genetics, AB. Offered by Prairie Cove Charolais



LT Sundance 2251 PLD
Sire of Lot 70B Embryos



Lot
71

Six (6) Packages of Five Units of Semen

CCC WC Resource 417 P

Male PMC764999 Feb. 17, 2014

EPDS	BW	WW	YW	MILK	CE
	-1.0	59	103	18	7.5

S LT RUSHMORE 8060 PLD
 LT RIO BRAVO 3181 P
 LT BRENDA'S EASE 3055PLD

D WC CCC BLUE GIRL 1528 P
 LT BLUE VALUE 7903 ET
 CCC BAD GIRLFRIEND U146 P ET

Resource is becoming a classic sire for consistent visual quality and the structure and design necessary for eye appealing offspring. The females are making very impressive mothers with fantastic udders and plenty of milk. Use Resource for

- A: 5 Straws
- B: 5 Straws
- C: 5 Straws
- D: 5 Straws
- E: 5 Straws
- F: 5 Straws

Semen is stored at Alta Genetics, AB.

Offered by Prairie Cove Charolais and Serhienko Cattle Co.



National Champion daughter of Resource



Kate Roberts

Lot
72A

Three (3) Units of Semen

M&M Outsider 4003 PLD

Male PMC749963 Apr. 1, 2014

EPDS	BW	WW	YW	MILK	CE
	-1.1	43	78	18	9.4

S LT LONG DISTANCE 9001 PLD
 LT SILVER DISTANCE 5342P
 LT BELLE 7026 P

D M&M MS CARBINE 1567 PLD
 M&M RAPTOR 8122 PLD
 MS COOLEY JPOT 1107N9

Offered by Sunville Farms



Miss Prairie Cove 16H
 Outsider daughter at Cay's Cattle



Winn Mans Lanza 610S

Lot
72B

Nine (9) Units of Semen

Winn Mans Lanza 610S

Male BKJ 610S PMC307395 Jan. 9, 2006

EPDS	BW	WW	YW	MILK	CE
	0.2	43	113	30	7.3

- S ABC LATORO 263G
- S SPARROWS DURANGO 585P
- SPARROWS BLANCHE 585G
- MERIT 5133E
- D WINN MAN MERIT 036K
- MERIT SMOOTHIE 8073H

Offered by Sunville Farms

Lot
72C

**Two (2) Conventional and
Three (3) Sexed Female Units of Semen**

EC No Doubt 2022P

Male EC 2022P PMC304019 Mar. 10, 2004

EPDS	BW	WW	YW	MILK	CE
	-0.4	55	121	25	8.7

- S WCR SIR TRADITION 066
- S M6 GRID MAKER 104 PET
- VCR MISS MAC IV 317
- VCR SIR DUKE 914 PLD
- D EC LADY DUKE 2022P
- JES MS ADVANTAGE C74

Offered by Sunville Farms



Mark Sued

EC No Doubt 2022P



**Lot
73**

Seven (7) Units of Semen

Merit Roundup 9508W

Male EYC 9508W PMC326558 Jan. 28, 2009

EPDS	BW	WW	YW	MILK	CE
	-1.6	49	101	4	6.5

SOS POLLED DETONATOR 8M

MERIT 1058L

S MXS VERMILLION 527R

D MERIT YOLANDA 7244T

MXS ESPEON 122L

MERIT YOLANDA 6116F

Semen is stored at Bow Valley Genetics, AB.
Offered by Serhienko Cattle Co.



TR PZC Mr Turton 0794 ET

**Lot
74**

Five (5) Units of Semen

TR PZC Mr Turton 0794 ET

Male 0794 PEMC340611 Mar. 11, 2010

EPDS	BW	WW	YW	MILK	CE
	0.0	33	69	31	9.4

THOMAS OAHE WIND 0772ET P

S TR MR FIRE WATER 5792RET

THOMASSWISSERSWEET1764ET

JWK IMPRESSIVE D040 ET

D THOMAS MS IMPRESSIVE 0641

BCI MISS VERYLIMIT 6033P

Semen is stored at Bow Valley Genetics, AB.
Offered by Serhienko Cattle Co.



TR PZC Rapid Fire 9775ET

**Lot
75**

Ten (10) Units of Semen

TR PZC Rapid Fire 9775ET

Male 9775 PMC363322 Apr. 13, 2009

EPDS	BW	WW	YW	MILK	CE
	-0.2	37	74	25	7.0

THOMAS OAHE WIND 0772ET P

S TR MR FIRE WATER 5792RET

THOMASSWISSERSWEET1764ET

JWK IMPRESSIVE D040 ET

D THOMAS MS IMPRESSIVE 0641

BCI MISS VERYLIMIT 6033P

Semen is stored at Bow Valley Genetics, AB.
Offered by Serhienko Cattle Co.



Lot 76A **Package of Three Embryos**
Cottage Lake Border Agent X AUTO Olga 498A

Lot 76B **Package of Three Embryos**
Cottage Lake Big Star X AUTO Olga 498A

PE EPDS	BW	WW	YW	MILK	CE
	3.1	63	93	17.5	7

PE EPDS	BW	WW	YW	MILK	CE
	3.4	71	145	18.5	8.5

S COTTAGE LAKE BORDER AGENT
CFLX WILD CARD
LAL MARILYN MONROE 42W
MAGS XYLOPOLIST

D AUTO OLGA 498A
EXLR MOLLY 7103K

S COTTAGE LAKE BIG STAR
CFLX WILD CARD
AUTO WAVERLY 602W
MAGS XYLOPOLIST

D AUTO OLGA 498A
EXLR MOLLY 7103K

AUTO Olga is most definitely the donor cow at the forefront of our Limousin program. Not only is she phenotypically elite but she has proven her worth by raising two of the most dominant show heifers in the breed. Her only daughter to be sold was purchased by Wiley Fanta and went on to be named the National Champion Limousin Female at the Toronto Royal. The other was retained at Boss Lake and hung numerous banners during her 2018, 2019 and 2020 show careers. Both matings are backed by proven bulls that are now deceased and have made an impact in terms of producing sound, functional cattle that work in both the pasture and the show ring. A rare opportunity to grab some sought after genetics that won't be offered again. **Guaranteeing one (1) pregnancy per mating, if implanted by a certified technician. Embryos are stored at Bow Valey Genetics, AB.**

Lot 76A - Exportable to Australia and USA
Lot 76A - Canadian Qualified
Offered by Boss Lake Genetics



Boss Lake Ms Molly 814F
Full Sibling to Lot 76A Embryos



Boss Lake Ms Molly 814F
Full Sibling to Lot 76A Embryos



Boss Lake Ms Molly 812F
Full Sibling to Lot 76A Embryos



Lot
77

Package of Three (3) Embryos

Cottage Lake Border Agent X Greenwood PLD Zoom Bloom

PE EPDS	BW	WW	YW	MILK	CE
	3.9	68	99	24	5.5

S CFLX WILD CARD
COTTAGE LAKE BORDER AGENT
LAL MARILYN MONROE 42W

D WULFS REVOLVER 1219R
GREENWOOD PLD ZOOM BLOOM
GREENWOOD PLD TALKINDIRTY

If this pedigree isn't proven, then I don't know what is. A flush that has generated well over \$100,000 in revenue over the last few years and has taken the breed by storm. In our opinion, neither the dam nor sire need any introduction and are noted by some of the most prolific breeders in the industry. Performance orientated progeny that have demanded elite prices, dominated the show ring and continue to prove their relevance and consistency in the breed. If your serious about owning top end genetics that will continue to progress your program forward then these embryos should, without a doubt, be on your list to own.

Guaranteeing one (1) pregnancy, if implanted by a certified technician. Embryos are stored at Bow Valley Genetics, AB. Exportable to the USA.

Offered by Boss Lake Genetics



Cottage Lake Border Agent
Sire of Embryos



Lot 78 Two (2) Packages of Three Exportable Embryos
 Haroldson's United 33D 36G X Harvie MS Firefly ET 35Z

PE EPDS	BW	WW	YW	MILK	CE
	3.9	57.7	95.9	30.1	-1.4

S HAROLDSON'S UNITED 33D 36G DLF HYF IEF MSUDF MDF
 HAROLDSON'S WLC MIRA ET 52B DLF HYF IEF MDC

D HARVIE MS FIREFLY ET 35Z DLF HYF IEF
 HARVIE MISS FIREFLY 51F DLF HYF IEF

In a time when there haven't been many opportunities to win, that's all this duo has done! In December, Firefly 35Z was crowned Hereford Miss World and in January, United added US National Champion to his already impressive resume. As if that wasn't enough, United went on to be Supreme Champion Bull over all breeds at the 2021 Cattlemen's Congress. Don't miss out on what could be one of the only opportunities to add United to your 2022 calf crop and don't overlook what Miss World can bring to this genetic opportunity.
Guarantee of one (1) 90 day pregnancy per 3 embryos if implanted by a certified technician.
Embryos are stored at Davis-Rairdan Embryo Transplants Ltd.
Offered by Iris Creek Farms



Haroldson's United 33D 36G
 Sire of Embryos



Lot 79A Package of Three (3) Embryos
H RW All In 7165 ET X Next Gen Riesling 295 ET

EPDS	BW	WW	YW	MILK	CE
	5.3	68.2	113.1	19.1	-5.6

S JDH JJD 9Y 485T ALL IN 96B ET
H RW ALL IN 7165 ET MDF
 EXR TERRI 489

D H/TSR/CHEZ/FULL THROTTLE ET
NEXT GEN RIESLING 295 ET
 STAR SPIRIDGE KESSEY 321L ET DLF HYF IEF

Lot 79B Package of Three (3) Embryos
Haroldson's JVJ Royal 24E X Next Gen Riesling 295 ET

PE EPDS	BW	WW	YW	MILK	CE
	5.5	66.3	112.2	20.8	-4.1

S H BK CCC SR GAME CHANGER ET
HAROLDSON'S JVJ ROYAL 24E DLF HYF IEF MSUDF
 HAROLDSON'S AD JESSICA 48Y 13B DLF HYF IEF MSUDF

D H/TSR/CHEZ/FULL THROTTLE ET
NEXT GEN RIESLING 295 ET
 STAR SPIRIDGE KESSEY 321L ET DLF HYF IEF

Next Gen Riesling 295 ET was the 2016 Canadian National Junior Champion Female. Since she has gone on to be a superior donor female for us and Harvie Ranching, Olds, Alberta. She ranks in the top 1% of the breed for weaning weight, yearling weight, and rib-eye area, the top 2% for cow weight and the top 10% for udder suspension. She has proven to be a great herd bull producer... "Empower" was selected by Torch View Cattle Company, White Fox, Saskatchewan and sired the \$37,000.00 high selling heifer calf in the recent record breaking Harvie Ranching Dispersal. She is the mother of "Concept" at Chittick Family Hereford Ranch, Mayerthorpe, Alberta, "Endurance" at Nature's Acres and "Established" working at K-Cow Ranch, Elk Point, Alberta. Harvie OVHF Riesling 3F was selected by Otter Creek, Venture Livestock and Double H Cattle Co. for their joint donor program.

The mating to H RW All In 7165 ET are full sibs to Harvie OVHF Hudson 174H, \$30,000.00 high selling bull calf selected by Schmidt Herefords, TSR Cattle and Walsh Farms. H RW All In 7165 ET is an outcross sire bred by the Hoffman's. He ranks in the top 4% of the breed for rib-eye, the top 6% for scrotal, the top 16% for yearling and the top 18% for weaning weight.

Haroldson's JVJ Royal 24E, the 2019 CWA President's Classic Champion, is a homozygous polled sire out of the great Jessica cow family at Chads. He ranks in the top 3% of the breed for rib-eye area, the top 10% for udder suspension and top 18% for yearling weight.

Guaranteeing one (1) pregnancy per mating, if implanted by a certified technician. Embryos are stored at Bow Valley Genetics, AB. Offered by Blairs.Ag Cattle Co.



NJW 73S Rimrock 27C ET
Sire of Embryos

Lot
80

Two (2) Packages of Three Embryos

NJW 73S 38W Rimrock 27C ET X Blair-Athol 946 Haylee 106B

PE EPDS	BW	WW	YW	MILK	CE
	3.3	51.3	83.3	28.2	-1.9

NJW 76S P20 BEEF 38W ET

S NJW 73S 38W RIMROCK 27C ET ^{MDF}

NJW P606 72N DAYDREAM 73S ^{DLF HYF IEF}

D BLAIR-ATHOL 946 HAYLEE 106B ^{DLF HYF IEF MSUDF}

SQUARE-D PLAINSMAN 946Y ^{DLF HYF IEF}
HAROLDSON'S HAYLEE 68M 66P

When sourcing one of our best cows to flush to Rimrock we chose Haylee 106B partially based on the strength of her 2020 bull calf (9H) who is sired by Rimrock. This cow has been as consistently good at Blair Athol as any cow in our herd. Spring Mountain Stock Farm in Alberta has a very good daughter and Huberdale Farms has a son. Our high selling bull in 2020 to Manns Polled Herefords and now Golden Jet 9H who will be a feature in the 2021 bull sale. 106B is a big bodied, wide topped, red eyed Plainsman daughter who has a near perfect udder. For those of you who follow cow families, it is worth noting 106B is a maternal sister to Haylee 11S, who is the dam of Haylee 39U. 39U is one of the most prominent donors at Remitall West. The Rimrock mating to this cow has already been proven. Rimrock himself is known to sire productive, milky females and stout, rugged sons. Rimrock sold back to NJW in the spring of 2020 and is a major cornerstone to their program going forward. Expect to hear great things from both north and south of the 49th. This is a great way to add his genetics to your herd with a powerful cow family.

Guaranteeing one (1) pregnancy, if implanted by a certified technician.

All are Grade A fully exportable. Embryos are stored at Embryo Genetics Ltd. (Dr. David Hamilton) Morden, MB.

Offered by Blair Athol Farms



Blair-Athol Golden Jet 9H
Full Sibling to Embryos



Lot 81A

Package of Three (3) Embryos

Haroldsons WLC Rhino ET 48Y X
NJW 73S 485T Goldenrod 62A ET

PE EPDS	BW	WW	YW	MILK	CE
	3.6	62.7	104.8	32.7	2.7

SHFTAHOER117T100 DLFHYFIEFMSUDF

S HAROLDSONS WLC RHINO ET 48Y DLFHYFIEF
HAROLDSON'S 37H MIRA ET 62K

KJHMH33NREDEEM485TET DLFHYFIEF

D NJW 73S 485T GOLDENROD 62A ET
NJWP60672NDAYDREAM73S DLFHYFIEF

Lot 81B

Package of Four (4) Embryos

Whitehawk Warrior 845C ET X
NJW 73S 485T Goldenrod 62A ET

PE EPDS	BW	WW	YW	MILK	CE
	3.4	67.3	104.6	36.6	2.0

UPH PROSPECTOR P152

S WHITEHAWK WARRIOR 845C ET
GRANDVIEW CMR 4003 BETH Y115ET

KJHMH33NREDEEM485TET DLFHYFIEF

D NJW 73S 485T GOLDENROD 62A ET
NJWP60672NDAYDREAM73S DLFHYFIEF

NJW 73S 485T Goldenrod 62A ET was our selection from Ned and Jan Ward. Her mother, NJW P606 72N Daydream 73S, has proven to be the most prolific donors in the breed worldwide. She is the mother of NJW 73S M326 Trust 100W ET, U.S. National Champion selected by River Valley Polled Herefords, Newburg, Ontario; the mother of NJW 73S W18 Home Grown 8Y ET and NJW 73S W18 Hometown 10Y ET at Indian River Cattle Co, Indian River, Ontario, NJW 73S W18 Home Ranch 42Y ET selected by Wascana Cattle Co., Regina, Saskatchewan and NJW 73S Downhome 21Z ET selected by Wm. & Audrey Lyons, St. Thomas, Ontario. A daughter of Goldenrod was selected by McLennan Creek Herefords, Abbotsford, British Columbia.

The mating to Haroldson's WLC Rhino ET 48Y puts two of the great females in the breed into one mating. Rhino is sired by the cow-maker, SHF Tahoe R117 T100 out of Haroldson's 37H Mira ET 62K, an outstanding donor female with 78 lifetime progeny... it would take pages of ink to list her progeny's accomplishments. Haroldson's WLC Rhino et 48Y ranks in the top 1% of the breed for cow weight, the top 4% for yearling weight, the top 8% for total maternal, the top 10% for milk and the top 15% for weaning weight.

Whitehawk Warrior 845C ET is owned by ANL Polled Herefords and Semex Beef. He is a multi-trait leader for weaning weight, yearling weight, milk, total maternal, cow weight, rib-eye, and marbling. He is a short marked, heavy pigmented sire whose daughters are all replacements.

Guaranteeing one (1) pregnancy per mating, if implanted by a certified technician. Embryos are stored at Bow Valley Genetics, AB. Offered by Blairs.Ag Cattle Co.



Haroldsons WLC Rhino ET 48Y X

Lot 82A Package of Three (3) Embryos

Haroldsons WLC Rhino ET 48Y X
TH 403A 475Z Rita 352C ET

PE EPDS	BW	WW	YW	MILK	CE
	4.7	66.2	115.9	25.8	-0.2

SHF'TAHOER117T100 DLFHYFIEFMSUDF

S HAROLDSONS WLC RHINO ET 48Y DLF HYF IEF
HAROLDSON'S 37H MIRA ET 62K

TH 89T 755T STOCKMAN 475Z

D TH 403A 475Z RITA 352C ET
TH 71U 17Y RITA 403A

Lot 82B Package of Three (3) Embryos

Perks 003 Easy Money 4003
TH 403A 475Z Rita 352C ET

PE EPDS	BW	WW	YW	MILK	CE
	5.3	65.2	115.2	21.6	-0.7

BR CURRENCY 8144 ET

S PERKS 0003 EASY MONEY 4003
PR 144U RAMONA 0003 ET

TH 89T 755T STOCKMAN 475Z

D TH 403A 475Z RITA 352C ET
TH 71U 17Y RITA 403A

TH 403A 475Z Rita 352C is one of the great young donors now owned by MJT Cattle Co., Edgerton, Alberta Her mother, TH 71U 17Y 403A is the dam of TH 403A 475Z Pioneer 358C ET. Daughters of "352C" have been selected by DJD Polled Herefords, Abbotsford, British Columbia, Wascana Cattle Co., Regina, Saskatchewan and Medonte Highlands Polled Herefords, Orillia, Ontario. Rita 352C ranks in the top 1% of the breed for yearling weight, the top 2% for weaning weight and the top 5% for cow weight.

The mating to Haroldson's WLC Rhino ET 48Y will combine predictable performance and high maternal values. There are great cows stacked upon great cows in this exciting mating.

Perks 003 Easy Money 4003 comes to you with a different slant and some very predictable old-line genetics. His sire, BR Currency 8144 ET bred by Barber Ranch, is a grandson of two-time National Champion Remital Online 122L while his mother is a daughter of TH Bailout going back to GH Rambo. Perks 003 Easy Money 4003 is a multi-trait leader for yearling weight, cow weight, fat, and rib-eye area.

Guaranteeing one (1) pregnancy per mating, if implanted by a certified technician. Embryos are stored at Bow Valley Genetics, AB Offered by Blairs.Ag Cattle Co.



Lot
83

Seven (7) Packages of Five Units of Semen

TH 403A 475Z Pioneer 358C ET
Male 358C PC03042659 Jan. 9, 2015

EPDS	BW	WW	YW	MILK	CE
	6.3	85.1	144.4	27.0	-4.8

S TH 89T 755T STOCKMAN 475Z **D** TH 71U 17Y RITA 403A
 TH 223 71I VICTOR 755T DLF HYF IEF TH 22R 16S LAMBEAU 17Y
 TH 16G 20N GEMINI 89T DLF HYF IEF TH 7N 45P RITA 71U DLF HYF IEF

This might be the last opportunity to purchase semen on this great breeding sire in Canada, there will not be any more for sale in 2021. Owned with Topp Herefords, Upstream Ranch and the Ostermeiers, Pioneer might well be one of the most complete and predictable breeding tools for your program. He is a trait leader for weaning weight, yearling weight, total maternal, scrotal, cow weight and rib-eye area. Backing that criteria is his sire who is a multi-trait leader in six traits.

**Note that this will be the last of the Pioneer 358C semen available in Canada.
 Semen is stored at Bow Valley Genetics, AB.
 Offered by Blairs.Ag Cattle Co.**



Lot
84

Three (3) Packages of Ten Units of Semen

Haroldson's JVJ Royal 24E DLF HYF IEF MSUDF
Male AFSY 24E PC03036068 Feb. 20, 2017

EPDS	BW	WW	YW	MILK	CE
	5.0	58.2	99.2	26.0	-0.8

S H BK CCC SR GAME CHANGER ET
KJ HVH 33N REDEEM 485T ET DLFHYFIEF
NJW 78P 63N LADYSPORT 51W ET

D HAROLDSON'S AD JESSICA 48Y 13B DLF HYF IEF MSUDF
HAROLDSON'S WLCRHINO ET 48Y DLFHYFIEF
HAROLDSON'S WS JESSICA 4T 60X

Royal was the 2017 President's Classic Breed Champion and went on to be the Senior Bull Calf Champion in 2017. In 2019 he was the Senior Champion and Reserve National Champion Bull. His mother is a highly productive, beautiful uddered Rhino daughter. Take advantage of this opportunity. Semen is stored at Bow Valley Genetics, AB. Offered by Haroldson's Polled Herefords and MJT Cattle Co. Ltd.



Lot
85

Five (5) Packages of Ten Units of Semen

Haroldson's SCC Pavati 48G DLF HYF IEF MSUDF
Male AFSY 48G PC03061874 Mar. 14, 2019

EPDS	BW	WW	YW	MILK	CE
	3.9	55.1	84.3	37.1	0.7

R LEADER 6964

HAROLDSON'S WLC RHINO ET 48Y DLF HYF IEF

S HAROLDSON'S TRACTION ET 50E DLF HYF IEF MSUDF **D** HAROLDSON'S WSF LASSIE 48Y 42C

HAROLDSON'S MARVEL 45P 5W DLF HYF IEF

HAROLDSON'S LASSIE 425X 22Z DLF HYF IEF

When we saw Haroldson's Pavati at the 2019 Canadian Western Agribition, we knew he was a bull that we needed to keep an eye on. His natural muscle expression, style, foot structure and overall soundness was second to none in the Hereford show. We were then fortunate enough to acquire the semen rights on him the next spring when he commanded an impressive \$29,000. Since then he has developed beyond our expectations. He has simply grown into one of the most complete Hereford bulls that we have ever seen. Look for Pavati to add muscle, soundness, foot quality and overall style to the Hereford breed. Homozygous Polled. Semen is stored at Bow Valley Genetics, AB.

Offered by Haroldson's Polled Herefords and First Class Cattle Co.



Lot
86

Package of Three (3) Embryos
Unlimitedspots GRNWD Future20F X GF Raina 1G

S RIVER HILL BACKGROUNDER 025B
UNLIMITEDSPOTS GRNWD FUTURE20F **D** GF Raina 1G
BLACKIE RAINA OF P.A.R. 21Z

P.A.R. ACE IN A HOLE 66A
RAINA OF P.A.R. 45Z

Our first venture into the speckle park world and we believe we have one that can do a lot of good. Raina is an attractive female with loads of capacity and depth of rib. Her brother's performance was exceptional on test and sired by Ace In A Hole we know she can produce. These embryos are by the very popular Unlimited Spots GRNWD Future 20F bull who has started to make a name for himself to make progeny that grow well and are stout featured.

**Guaranteeing one (1) pregnancy, if implanted by a certified technician.
Offered by Gilchrist Farms**



Unlimitedspots GRNWD Future20F
Sire of Embryos



Lot
87

Two (2) Packages of Three Embryos

JSF Wall Street 36E X RLE Sunrise 106F

S JSF WALL STREET 36E

ASPEN ACRES T.N.T. 4Y

REDNECK WHISKEY 7W

D RLE SUNRISE 106F

CODIAK PUTNAM GNK 61Y

RIVER HILL 26T KINDLE 17X

Here is your opportunity to purchase embryos on our recent purchase, the outcross RLE Sunrise 106F. Mated to the popular JSF Wallstreet 36E. Wallstreet progeny have been extremely popular, both male and female. These embryos offer a rare combination of genetics that will not often be offered for sale, don't miss your chance.

Embryos are exportable to Australia and New Zealand.

Guaranteeing one (1) pregnancy per package, if implanted by a certified technician. Embryos are stored at Davis-Rairdan Embryo Transplants Ltd., AB.

Offered by Uneeda Farms



Lot 88A Package of Three (3) Embryos
LLW Card True North G71 X Remington Miss Knight 63U

PE EPDS	BW	WW	YW	MILK	CE
	1.3	72.3	105.7	23.5	10.2

- S** LLW CARD TRUE NORTH G71
GSC GCCO DEW NORTH 102C
COX'S JOYS PRINCESS 711E
- D** REMINGTON MISS KNIGHT 63U
KN REMINGTON ON TARGET 2S
BAR 15 MISS KNIGHT78E-51G

Lot 88B Package of Three (3) Embryos
Bailey's One Of A Kind X Remington Miss Knight 63U

PE EPDS	BW	WW	YW	MILK	CE
	3.6	76.9	116.6	23.8	8.1

- S** BAILEY'S ONE OF A KIND
PROFIT
BAILEY'S MS DREAMY 946W
- D** REMINGTON MISS KNIGHT 63U
KN REMINGTON ON TARGET 2S
BAR 15 MISS KNIGHT78E-51G

Embryos are stored at Bow Valley Genetics, AB.
Offered by G R Simmentals



LLW Card True North G71
Sire of Lot 88A Embryos



Bailey's One Of A Kind
Sire of Lot 88B Embryos



**Lot
89A**

Package of Three (3) Embryos

S A V America 8018 X Coleman Dixie Erica 8273

**Lot
89B**

Package of Three (3) Embryos

S A V Cutting Edge 4857 X Coleman Dixie Erica 8273

PE EPDS	BW	WW	YW	MILK	CE
------------	----	----	----	------	----

- S** S A V AMERICA 8018
 - S A V PRESIDENT 6847
 - S A V MADAME PRIDE 0075
 - LEACHMAN RIGHT TIME
- D** COLEMAN DIXIE ERICA 8273
 - COLEMAN DIXIE ERICA 143

PE EPDS	BW	WW	YW	MILK	CE
------------	----	----	----	------	----

- S** S A V CUTTING EDGE 4857
 - S A V HARVESTOR 0338
 - S A V BLACKCAP MAY 5530
 - LEACHMAN RIGHT TIME
- D** COLEMAN DIXIE ERICA 8273
 - COLEMAN DIXIE ERICA 143

Embryos are stored at Bow Valley Genetics, AB.
Offered by Skull Creek Ranches



S A V America 8018
Sire of Lot 89A Embryos



S A V Cutting Edge 4857
Sire of Lot 89B Embryos

Consignors

Alton Century Farms Ltd. Blake, Julia, Eve, & Garrett Alton 541 Siderroad 15N, Kincardine, ON N2Z 2X6 519-440-6580 baltoncenturyfarms@gmail.com	Lot 56, 57	G R Simmentals Gary & Leigh Rairdan Box 285 Stettler, AB T0L 2L0 403-740-6823 gary@stettlerauction.ab.com	Lot 61
Blairs Ag Cattle Co. Kevin Blair Box 610, Lanigan, SK S0K 2M0 306-365-7922 Blake MacMillan: 306-528-7484 kevin@blairs.ag	Lot 53, 69, 79, 81, 82, 83	Grist Farms Dave Grist 6031 4th Line Erin, Orton, ON L0N 1N0 519-589-2619 dgrist@hotmail.ca	Lot 10
Blair Athol Farms Box 386, Arcola, SK S0C 0G0 Duncan & Val Lees 306-455-2619 306-577-9703 Jeff, Grace, Christin, Kylee, Jackson, Hannah & Josie 306-577-1375 www.blairatholfarms.com	Lot 80	Haroldon's Polled Herefords Chad, Lenna & Kristy Wilson Box 372, Wawota, SK S0G 5A0 Chad: 306-577-1256	Lot 84, 85
Boss Lake Genetics Kyle & Brittany Boss 52213 Range Rd 20, Parkland County, AB T7Y 2G6 Kyle: 780-920-7014 Brittany: 780-699-4266 bosslakegenetics@gmail.com	Lot 76, 77	Harprey Angus Farms Allan & Don Hargrave 307483 Centre Line A RR 2, Proton Station, ON N0C 1L0 519-923-5192 Allan Hargrave: 519-375-5541 Don Hargrave: 519-375-1500 Jarrett Hargrave: 519-374-5516 harprey@gmail.com	Lot 34
Cash Cattle Company. Nolan Cash 7317 Township Rd 105, Cypress County, AB T0K 1Z0 403-548-9651 cashfarms@outlook.com	Lot 4B	Hasson Livestock Rob Hasson 5536 Township Rd 3 RR 7, Guelph, ON N1H 6J4 416-817-7339 hassonlivestock@live.com	Lot 31
Cinderlyn Farms Ltd. Merlyn Howg 48 Waterfront Landing, Coaldale, AB T1M 0B4 403-634-1343 cinderlynfarms@shaw.ca	Lot 44	Hollinger Land and Cattle Chad & Breanne Trevor & Melody Box 276, Neudorf, SK S0A 2T0 Chad: 306-331-0302 Trevor: 306-728-8422 Herdsman: Mark Piller: 306-730-7170	Lot 45
CRM Simmentals Chad, Stacey, & Paige Meunier 780-674-2299 Cell: 780-674-7713	Lot 55	Horner Cattle Company Laura Horner Box 42, RR 1, Minnedosa, MB R0J 1E0 204-868-5335 hornercattlecompany@gmail.com	Lot 52
D & N Livestock Dave & Terri Rajotte Box 36, Peebles, SK S0G 3V0 Dave: 306-736-8698 Ben: 306-495-7727 Carlin: 306-495-7292 dtrajotte@sasktel.net	Lot 5	Iris Creek Farms Bruce, Heather, Bryce, Kent & Taylor Ribey 1073 Con 12, RR 4, Paisley, ON N0G 2N0 519-832-6221 Bruce: 519-353-8405 Heather: 519-389-7745 Bryce: 519-389-1571 icf@bmts.com	Lot 78
Double Bar D Farms The Dimler Family Box 580, Grenfell, SK S0G 2B0 Ken Dimler: 306-697-7204 Logan Dimler: 306-451-7229 kenshou@yourlink.ca	Lots 62-67	Jaymarandy Livestock Mark & Elizabeth Angus Box 1273, Beausejour, MB R0E 0C0 204-281-5099 jaymarandy@gmail.com	Lot 21
Double L Angus Lars Deleeuw and Laurie Brook 224 9th Conc RR3, Harley, ON N0E 1E0 519-424-9216 goangus6@gmail.com	Lot 47	Jacobs Ranch Troy Jacobs Box 98, Mountain View, AB T0K 1N0 403-331-1644 jacobsjtroy@gmail.com	Lot 15
Dudgeon Cattle Co. Brian & Kim Dudgeon and Family 1128 Bruce Road 40, Dobbinton, ON N0H 1L0 519-353-4014 Brian's Cell: 519-270-2500 dudgeongroup@gmail.com	Lot 31	Jimmy Joe Henderson Box 219, Stettler, AB T0C 1L0 403-740-9270 jimmyjoehenderson@gmail.com	Lots 33, 58
Dusty Rose Cattle Co. Ltd. Randy & Laurie James Box 67, Arcola, SK S0C 0G0 306-575-7833 jamesoilfield@sasktel.net	Lot 39	Johnson Livestock David & Andrew Johnson Box 17, Peebles, SK S0G 3V0 Andrew Cell: 306-736-7393 David Cell: 306-736-8631 johnsonlivestockangus@gmail.com	Lot 19
First Class Cattle Co. Darnell Fornwald Box 1740, Crossfield, AB T0M 0S0 403-795-8030 firstclasscattlemarketing@gmail.com	Lot 85	J Square S Angus Jordan, Jacklyn, Jayla, Scottie, & Ally Sies Stuart & Kathy Box 8, Grayson, SK S0A 1E0 306-728-1299 sieser94@hotmail.com	Lots 40, 41
Gilchrist Farms Brad & Kristie Gilchrist 1269 Grey Ox Ave RR 5 Lucknow, ON N0G 2H0 519-440-6720 brad@gilchristfarms.com	Lots 2, 8, 16, 56, 86	ustamere Farms Ltd. Jon & Shelly Fox Box 320, Lloydminster, SK S9V 0Y2 Jon Cell: 780-808-6860 justamere@sasktel.net	Lots 14, 36

Consignors

JKaralisha Cattle Company

Randy Wilson
34 Fourth Concession Road RR1, Burford, ON N0E 1A0
519-732-2774
shirley@rjwilson.ca

Knock Out Cattle Co.

Andrew & Julianne Hodges & Family
2222 O'Toole Rd, Cumberland, ON K4C 1N3
819-208-0787
ahodges@sgceresco.com

Larch Grove Farm Ltd.

Ian Richardson
405 Veterans Dr, Cormack, NL A8A 2R7
709-636-1270
ian_1414@hotmail.com

Leela Farms

John & Harry Leeflang
673 Drummond Con 1, Perth, ON K7H 3C3
613-812-4429
leelaholst@ripnet.com

LLB Angus

Lee & Laura Brown
Box 217, Erksine, AB T0C 1G0
Lee Cell: 403-740-9429
llbangus@telus.net

Mader Ranches

Ryley, Jill, Stella, & Hawkin Mader
Box 1 Site 12 RR 2, Carstairs, AB T0M 0N0
Ryley: 403-807-8140
Jill: 403-990-9187
maderranches@gmail.com

Mainstream Genetics

Chris Schmidt
Box 547, Watrous, SK S0K 4T0
306-946-7948
chris@mainstreamgenetics.ca

Maple Lake Stock Farms

Gerry & Linda Bertholet
Box 307, Hartney, MB R0M 0X0
204-858-2086
Gerry Cell: 204-741-0340
glbertholet@hotmail.com

Meadow Bridge Angus

JJ & Katie Deslippe
922580 Road 92 RR 4, St. Mary's, ON N4X 1C7
519-275-1739
deslippe@quadro.net

Pedersen Livestock

Kurt & Becky Pedersen
RR 1, Edgerton, AB T0B 1K0
Kurt Cell: 780-209-9999
pedersenvivestock@yahoo.ca

Poplar Meadows Angus

Tanya & Monty Belsham
Ryan Currie: Herdsman
Box 1025, Houston, BC V0J 1Z0
Tanya Cell: 250-845-8474
Ryan Cell: 613-883-2141
tdbelsham@gmail.com

Prairie Cove Charolais

Tim & Wanda Bullick
Tyler & Justine Bullick, Indy and Scarlet
Box 672, Bashaw AB T0B 0H0
Cell: 403-501-0660
tyler.bullick2014@gmail.com

Premier Livestock

Peter Frijters
5164 Line 58 RR 2, Milverton, ON N0K 1M0
519-276-9314
pfrijters@crinet.com

Lot 18

R Plus Simmentals

Marlin & Lucille LeBlanc
Box 1476, Estevan, SK S4A 2L7
306-421-2470
marlin@sasktel.net

Lot 55

Lot 35

Serhienko Cattle Co.

Dennis, Lissa, Katie, & Cassidy Serhienko
Box 42, Maymont, SK S0M 1T0
306-389-7770
dl.serko@littleloon.ca

Lot 71, 73, 74, 75

Lot 8

SIBL Simmentals

Barclay & Michelle Smith & Family
Ivan & Linda Smith
780-305-6716
barclay.sibl@hotmail.com

Lot 55

Lot 46

Spring Creek Simmentals

Brian McCarthy
Box 467, Moosomin, SK S0G 3N0
306-435-7527
brian.mccarthy@live.ca

Lot 68

Stephens Genetics

Jeff Stephens
542 Woodhill Rd, Troy, ON L0R 2B0
905-317-8252
yellowbriarjeff@gmail.com

Lot 7

Lots 11, 12, 38, 42, 43

Strongbow Farms Ltd.

Devon & Heather Bertholet
Box 232, Hartney, MB R0M 0X0
204-747-4371
strongbowfarms@gmail.com

Lots 1, 6, 17, 20

Lots 59, 60

Sunderland Ranch

Terry & Rachele Sunderland
Box 2139, Maple Creek, SK S0N 1N0
306-662-3021
terrersunderland@sasktel.net

Lots 4A, 26

Lot 31

Sunville Farms

Duane, Nadine, Tara-Lynn, Trystann & Addyson Caumartin
McCreary, MB
204-572-6828
dncaumartin@gmail.com

Lots 72

Lot 54

Uneededa Farm

Wilf and Ruth Sunderland
Box 179, Paradise Valley, AB T0B 3R0
780-745-2694
780-214-1024
sunderland@mcsnet.ca

Lot 87

Lot 22, 23

Vissers Angus

Corne Vissers
53134 Heritage Line, Aylmer N5H 2R1
519-866-5480
vissersangus@yahoo.ca

Lots 27, 28, 29, 30

Lot 13

Willow Springs Stock Farm

Reed & Michelle Rigney & Family
Box 5959, Westlock, AB T7P 2P7
780-348-5308
rigney@clearwave.ca

Lots 48, 49, 50, 51

Lot 3

Windulan Cattle Company

Mike Portena
6077 Line 60 RR 1, Moncton, ON N0K 1P0
519-347-2907

Lot 9

Lots 70, 71

Z Bar Angus

Dave & Carol Gray
Box 203, Marsden, SK S0M 1P0
Home: 306-826-5560
Cell: 306-823-3954
zbar@mcsnet.ca

Lots 37

TERMS *and* CONDITIONS

TERMS: The terms of the sale are cash or cheque, payable at par at sale time. The right of property shall not pass until after settlement has been made; unless previous arrangements have been made. Every animal sells to the highest bidder and in cases of disputes, the auctioneer's decision will be final. Announcements from the auction block will take precedence over the printed matter in the catalogue. Current exchange rates will be announced sale day. All monies are in Canadian funds.

CERTIFICATE OF REGISTRATIONS: Each purebred animal will carry papers issued by the appropriate breed association unless otherwise stated. A certificate of registry duly transferred will be furnished to the buyer for each animal after payment has been made.

HEALTH: All animals in the sale have met all necessary health requirements.

PEDIGREE ESTIMATES: Pedigree Estimates (PE) are created on the projected mating of the animal's sire and dam based on averages of the two, creating estimated values that do not hold the same accuracy of actual EPDs issued from the association and should be used as such.

LIABILITIES: It is understood that T Bar C Cattle Co. (2013) Ltd. is acting only as a medium between buyer and seller and is not responsible for any failure on the part of either party to live up to his obligations. Neither does T Bar C Cattle Co. (2013) Ltd. assume any financial obligations to collect or enforce collection of any monies between parties and any legal action that may in exceptional cases be taken must be between the buyer and the seller. T Bar C Cattle Co. (2013) Ltd. assumes no responsibility for any credit extended by the seller to the buyer. The buyer must look to the seller for fulfillment of all guarantees and representations made hereunder.

DELIVERY: We will assist in arranging transportation wherever possible. Each purchase becomes the risk of the purchaser as soon as sold.

PHONE, MAIL, WIRE BIDS: Bidders unable to participate in the sale may phone, wire or mail their bids and instructions to the sale manager, auctioneer or special representatives. Bids must be received in sufficient time prior to the sale.

INSURANCE: We strongly recommend that insurance is purchased for full value.

ERRORS: All announcements at sale time, written or oral, supersede any written material in the catalogue.

Notes



IVF PAYS

The Boviteq Difference is at work from coast to coast with huge payoffs growing year after year!

WITH BOVITEQ

Work with donors every

2 weeks

As young as 7 months

100%

Leader In
Embryo Freezing
100% Direct Transfer



Industry's highest
success rate



Donors can be collected
open or up to 100 days
Pregnant, maintaining
calving interval

More Embryos Per Donor = **More** Calves On The Ground

Boviteq[®]
INNOVATIVE IVF SOLUTIONS



BOVITEQ IS A DIVISION OF SEMEX

LOCATIONS ACROSS CANADA

The Boviteq Difference is at work in herds across Canada with huge payoffs growing year after year!

Visit www.boviteq.com for a location near you.

Call Saray Rangel (450) 230 2099 for more information.